


## Setting Ethernet by Diagnostic Utility

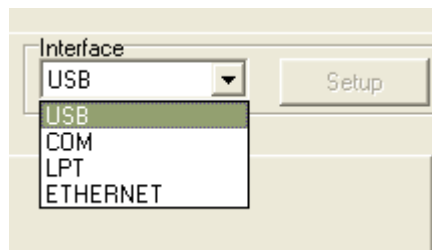
The Diagnostic Utility is enclosed in the CD disk \Utilities directory. Users can use this Utility to setup the Ethernet by RS-232, USB and Ethernet interfaces. The following contents will instruct users how to configure the Ethernet by these three interfaces.

### 1. Using USB interface to setup Ethernet interface

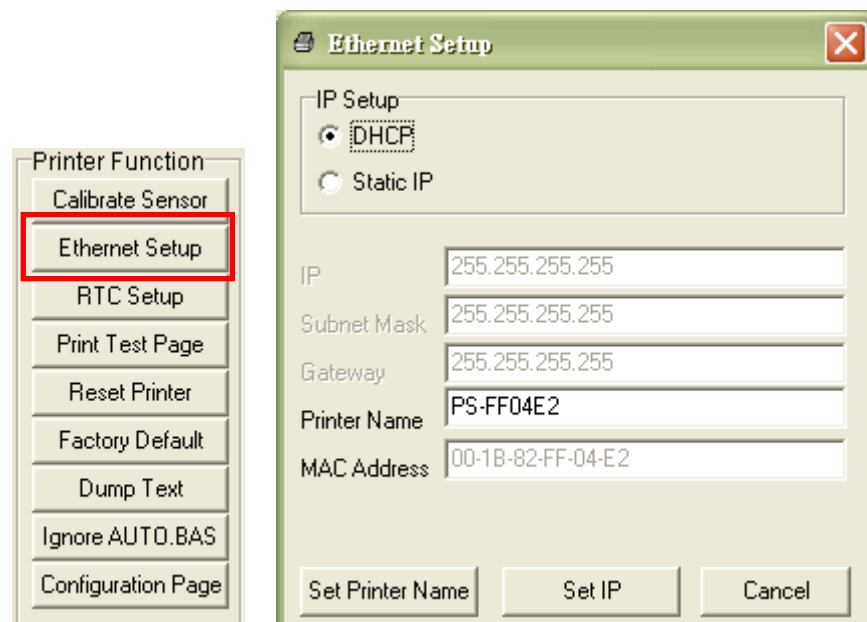
- (1). Connect the USB cable between the computer and the printer.
- (2). Turn on the printer power.
- (3). Start the Diagnostic Utility by double clicking on the  icon.

**Note: This utility works with printer firmware V6.00 and later versions.**


- (4). The Diagnostic Utility default interface setting is USB interface. If USB interface is connected with printer, no other settings need to be changed in the interface field.

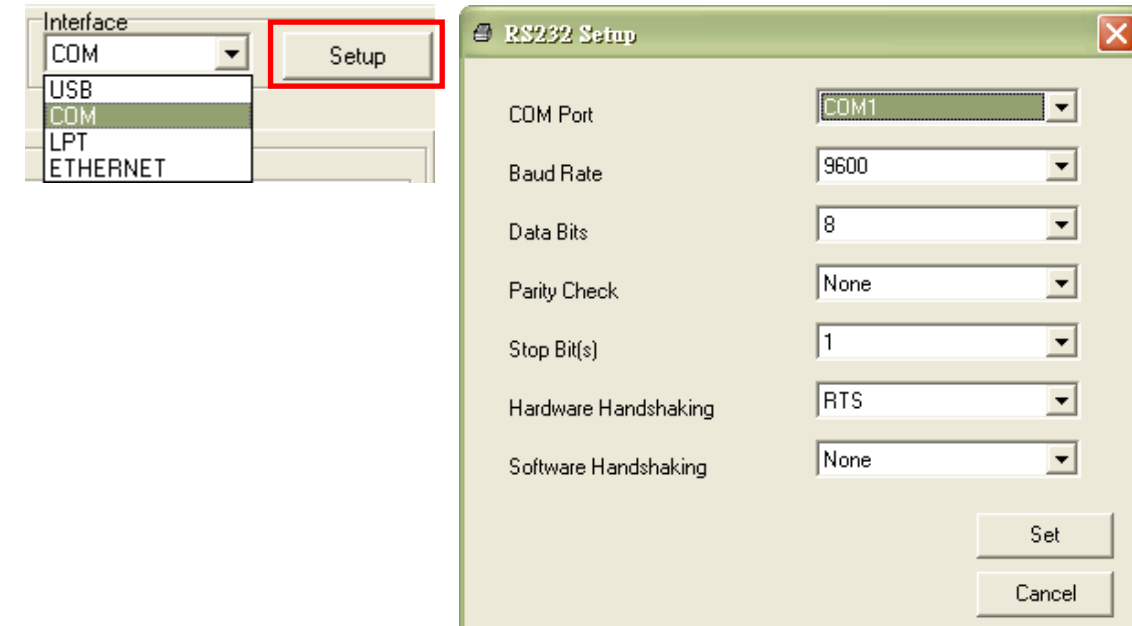


- (5). Click on the “Ethernet Setup” button from “Printer Function” group in Printer Configuration tab to setup the IP address, subnet mask and gateway for the on board Ethernet.

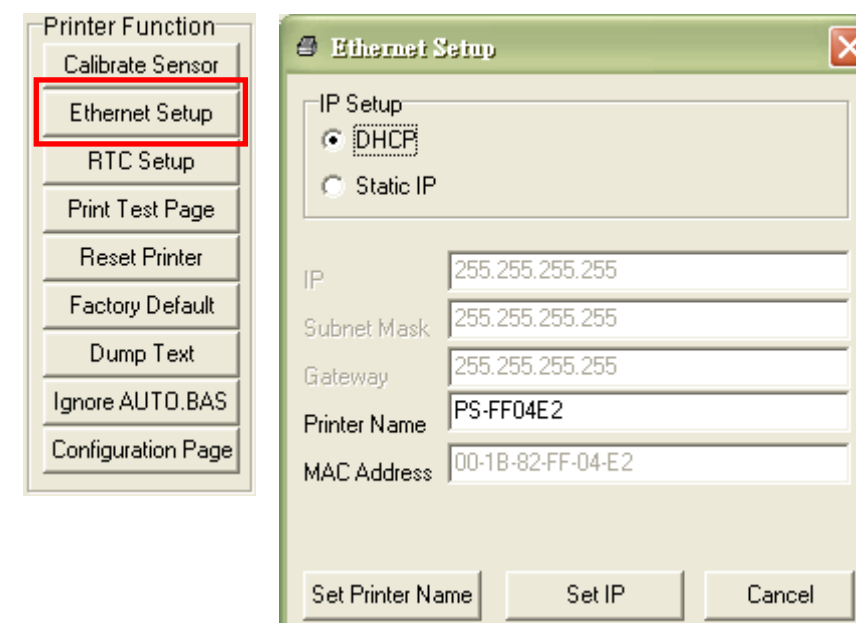


### 2. Using RS-232 interface to setup Ethernet interface

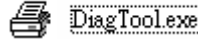
- (1). Connect the computer and the printer with a RS-232 cable.
  - (2). Turn on the printer power.
  - (3). Start the Diagnostic Utility by double clicks on the  icon.
- Note: This utility works with printer firmware V6.00 and later versions.**
- (4). Select “COM” as interface then click on the “Setup” button to setup the serial port baud rate, parity check, data bits, stop bit and flow control parameters.



- (5). Click on the “Ethernet Setup” button from printer function of Printer Configuration tab to setup the IP address, subnet mask and the gateway for the on board Ethernet.

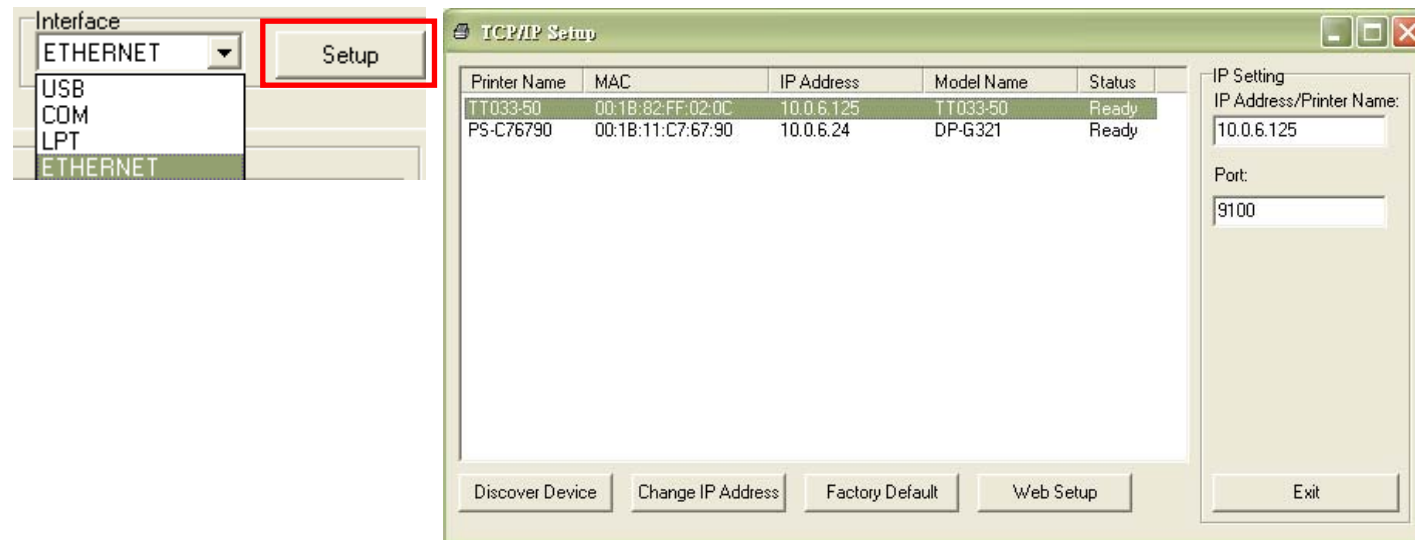


### 3. Using Ethernet interface to setup Ethernet interface

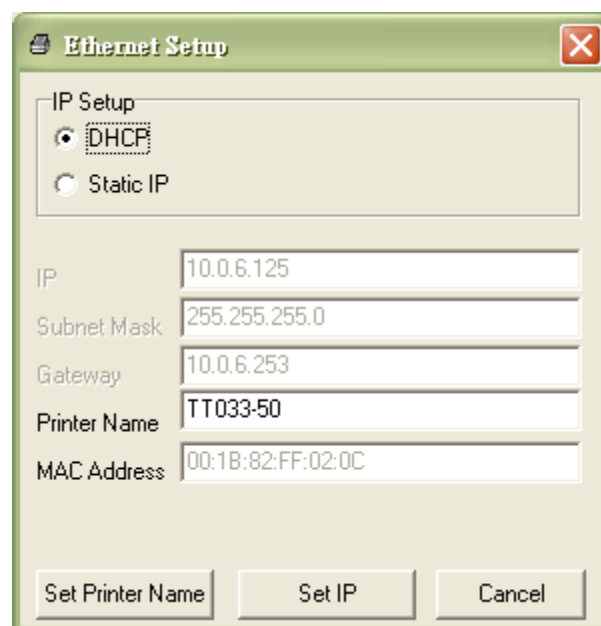
- (1). Connect the computer and the printer to the LAN.
- (2). Turn on the printer power.
- (3). Start the Diagnostic Utility by double clicks on the  icon.

**Note: This utility works with printer firmware V6.00 and later versions.**

- (4). Select “Ethernet” as the interface then click on the “Setup” button to setup the IP address, subnet mask and gateway for the on board Ethernet.



- (5). Click the “Discover Device” button to explore the printers that exist on the network.
- (6). Select the printer in the left side of listed printers, the correspondent IP address will be shown in the right side “IP address/Printer Name” field.
- (7). Click “Change IP Address” to configure the IP address obtained by DHCP or static.



The default IP address is obtained by DHCP. To change the setting to static IP address, click “Static IP” radio button then enter the IP address, subnet mask and gateway. Click “Set IP” to take effect the settings.

Users can also change the “Printer Name” by another model name in this fields then click “Set Printer Name” to take effect this change.

**Note: After clicking the “Set Printer Name” or “Set IP” button, printer will reset to take effect the settings.**

- (8). Click “Exit” button to exit the Ethernet interface setup and go back to Diagnostic Tool main screen.

#### Factory Default button

This function will reset the IP, subnet mask, gateway parameters obtained by DHCP and reset the printer name.

#### Web setup button

Except to use the Diagnostic Utility to setup the printer, you can also explore and configure the printer settings and status or update the firmware with the IE or Firefox web browser. This feature provides a user friendly setup interface and the capability to manage the printer remotely over a network.