

Section II: Illustrated Parts Lists

Only field-replaceable spares are given part numbers in the illustrated parts lists. Part numbers are not listed for common fasteners and attachment hardware. Items marked “Ref” in the illustrations refer to parts that are not spared or are part of another assembly.

Illustrations Of Printer Components

Figure 40. Top Cover, Doors, and Casters, Cabinet Model	page 250
Figure 41. Paper Stacker and Chains	page 252
Figure 42. Control Panel and Cabinet Details	page 254
Figure 43. Pedestal Details	page 256
Figure 44. Inside Covers, Cabinet Model	page 258
Figure 45. Inside Covers and Card Cage, Pedestal Model.....	page 260
Figure 46. Card Cage Detail, Pedestal Model.....	page 262
Figure 47. Print Mechanism and Circuit Boards: Early Models	page 264
Figure 48. Print Mechanism and Circuit Boards: Later Models	page 268
Figure 49. Magnetic Pickup Unit (MPU) and Extension Spring.....	page 272
Figure 50. Tractor Shafts	page 274
Figure 51. Platen.....	page 276
Figure 52. Motors, Card Cage Fan, and Paper Detector Switch.....	page 278
Figure 53. Circuit Breaker	page 280
Figure 54. Expansion Coax/Twinax Board	page 282
Figure 55. Ethernet Interface Assemblies	page 284

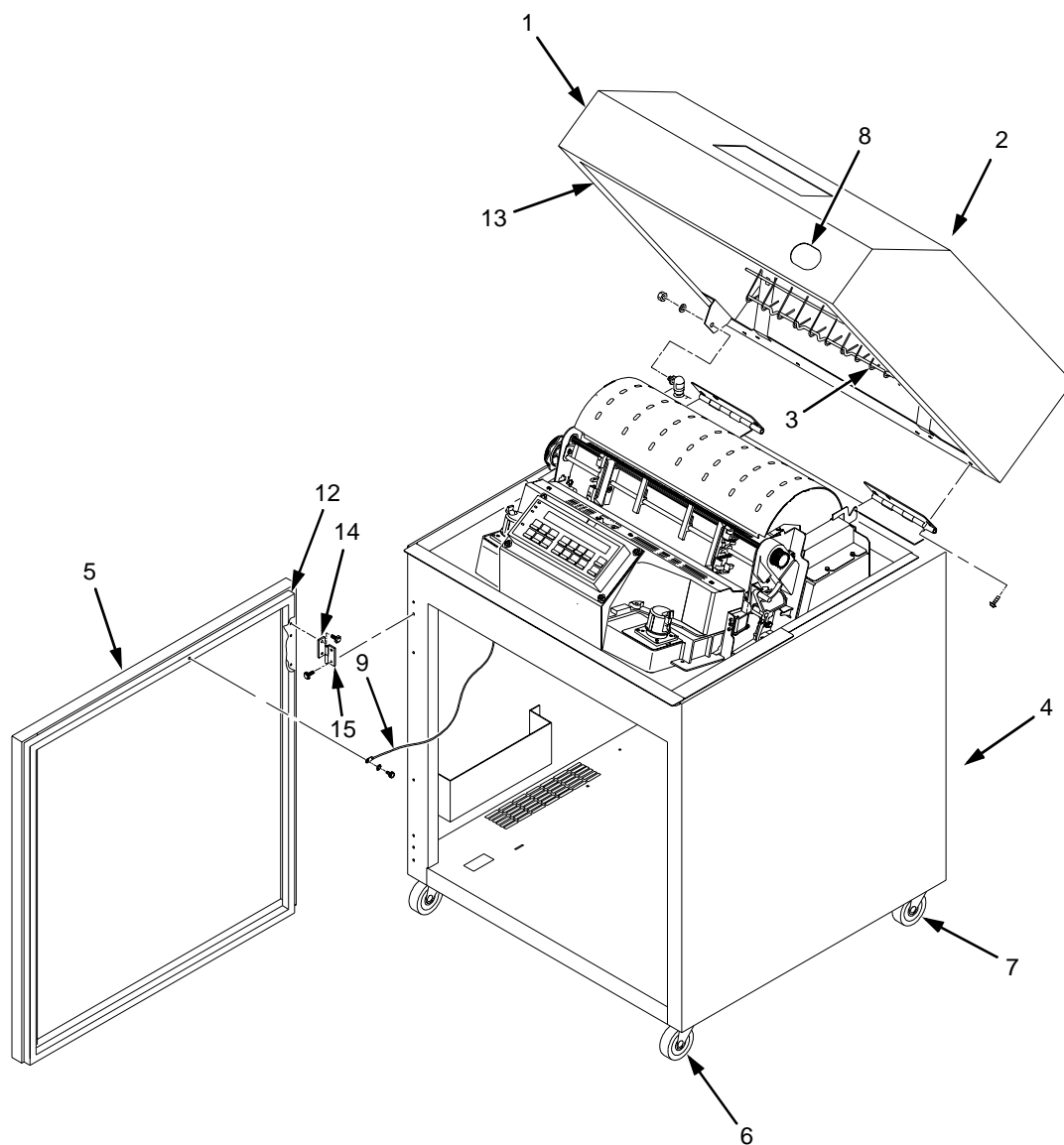


Figure 40. Top Cover, Doors, and Casters, Cabinet Model

Item No.	Part No. (Order No.)	Description	Notes
1	24H8961	Top Cover Kit	Includes mounting hardware
2	57G1492	Window, Top Cover	Not visible in Figure 40
3	14H5567	Wireform Paper Guide Assembly	Includes mounting hardware
4	24H8960	Rear Door Kit	Includes item 14
5	24H8959	Front Door Kit	Includes item 14
6	57G1485	Caster, with Brake	Two at front
7	57G1486	Caster, without Brake	Two at rear
8	14H5603	Logo, 6400	
9	30H4008	Wire Rope, Front and Rear	One on each door (Rear not shown in Figure 40)
10	30H3986	Shipping Container Kit	Cabinet models only (Not shown in Figure 40)
11	14H5572	Hardware Kit	Not shown in Figure 40
12	63H7510	Door Seal Kit	
13	63H7398	Top Cover Seal Kit	
14	93F7037	Hinge Plate, Top	Included in items 4 and 5
15	57G1484	Hinge Plate, Bottom	

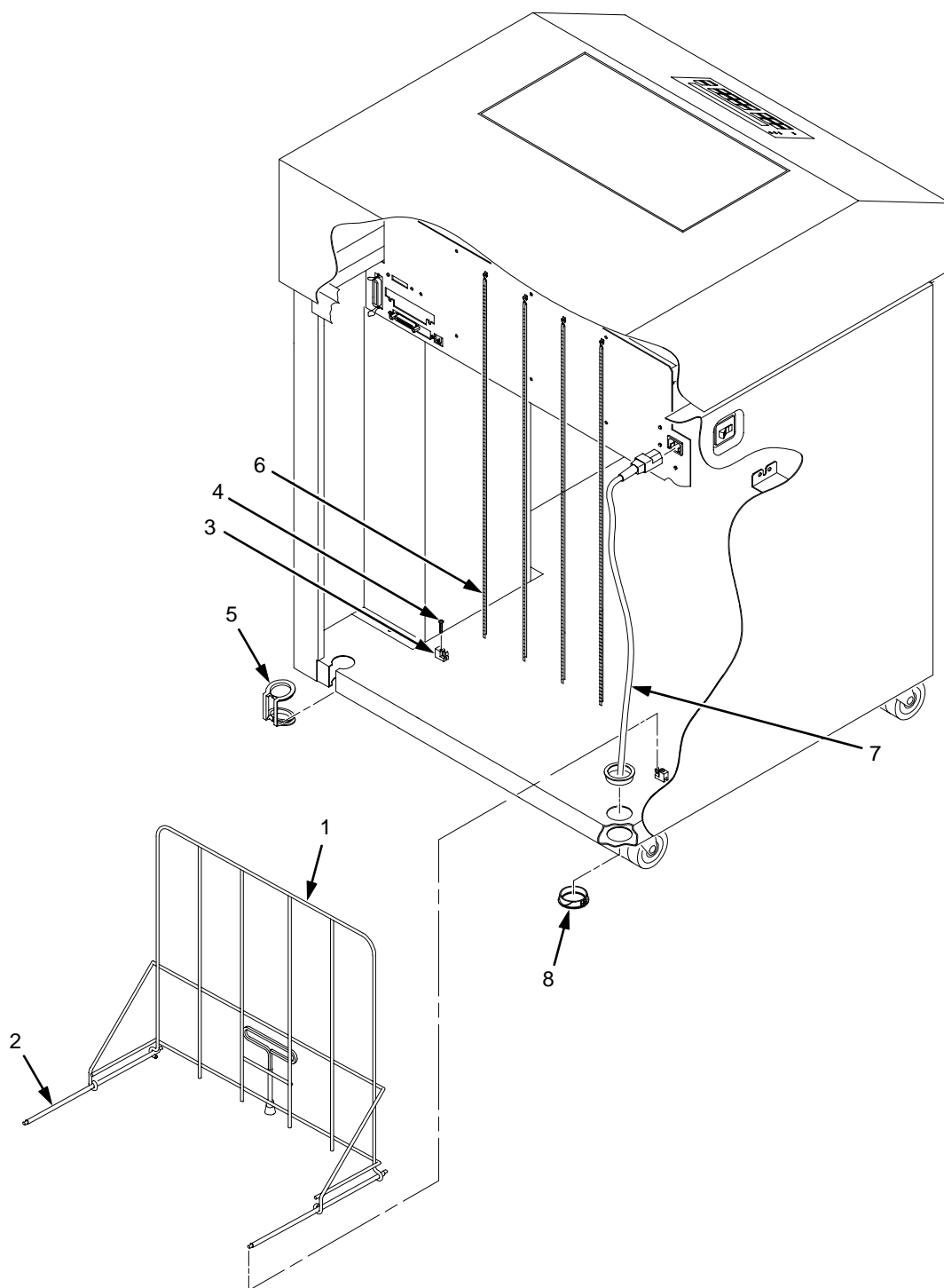


Figure 41. Paper Stacker and Chains

Item No.	Part No. (Order No.)	Description	Notes
1	57G7176	Stacker	
2	30H3981	Runner, Stacker	
3	04H4779	Riser, Stacker Runner	
4	Ref	Screw (4)	
5	14H5296	Spares Kit, Grommet	
6	14H5272	Chain Assembly Kit	Kit contains eight chains
7	57G7260	Power Cord, U.S.	
9	Ref	Grommet, Power Cord (2)	Included in item 5

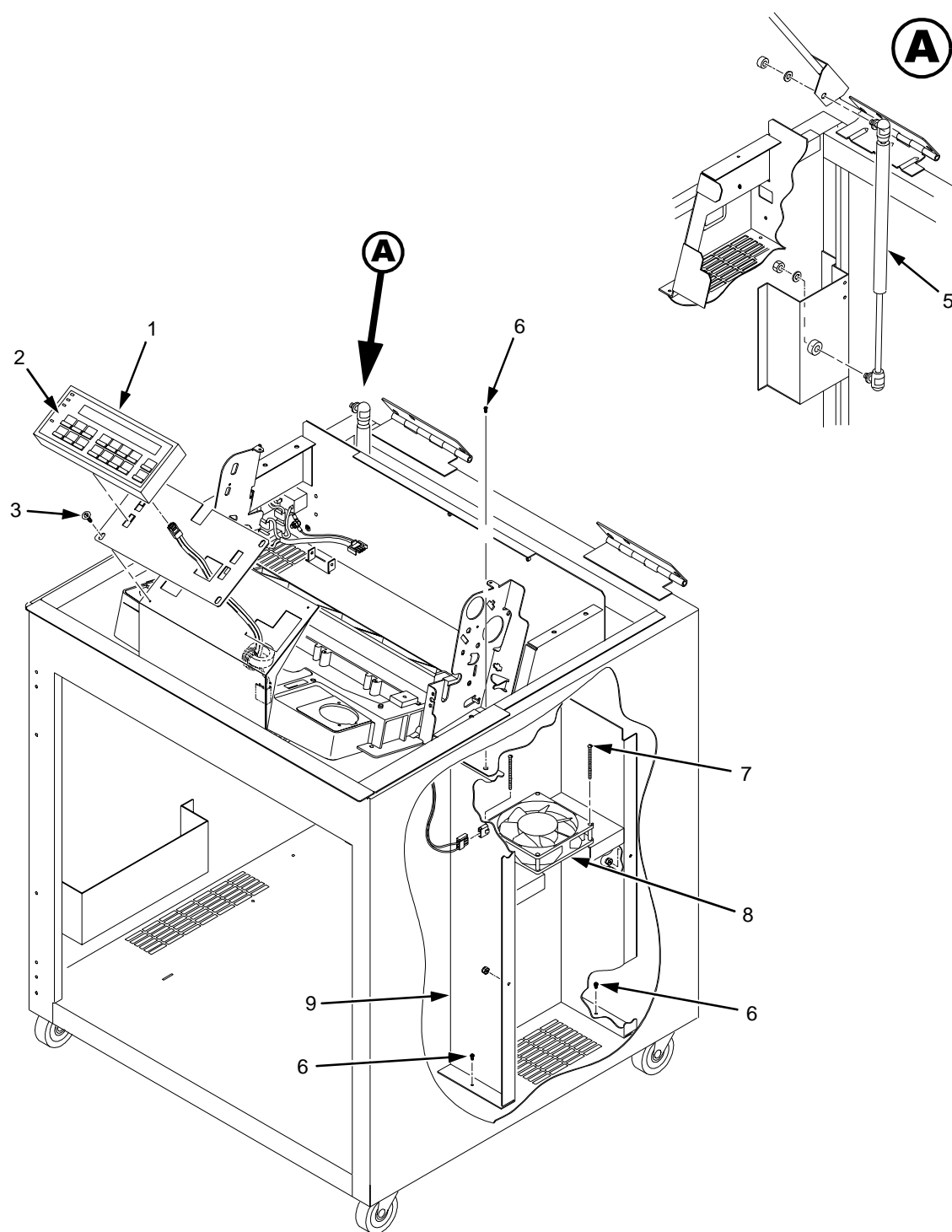


Figure 42. Operator Panel and Cabinet Details

Item No.	Part No. (Order No.)	Description	Notes
1	14H5299	Operator Panel, Cabinet	Includes mounting hardware
2	57G1598	Operator Panel Overlay	English
	57G1599	Operator Panel Overlay	Spanish
	57G1600	Operator Panel Overlay	French
	57G1601	Operator Panel Overlay	Italian
	57G1602	Operator Panel Overlay	German
	57G1603	Operator Panel Overlay	Dutch
	57G1604	Operator Panel Overlay	Brazilian Portuguese
3	Ref	Screw, Hex w/Lock Washer (4)	6-32x.375
4	14H5300	Cable Assy, Operator Panel	
5	57G1481	Dashpot Kit	Includes ball studs, spring clips, and mounting hardware
6	Ref	Screw w/Lock Washer (3)	6-32x.375
7	Ref	Screw w/Lock Washer (2)	6-32x.175
8	57G1440	Fan Assembly	
9	Ref	Duct, Air Exhaust	

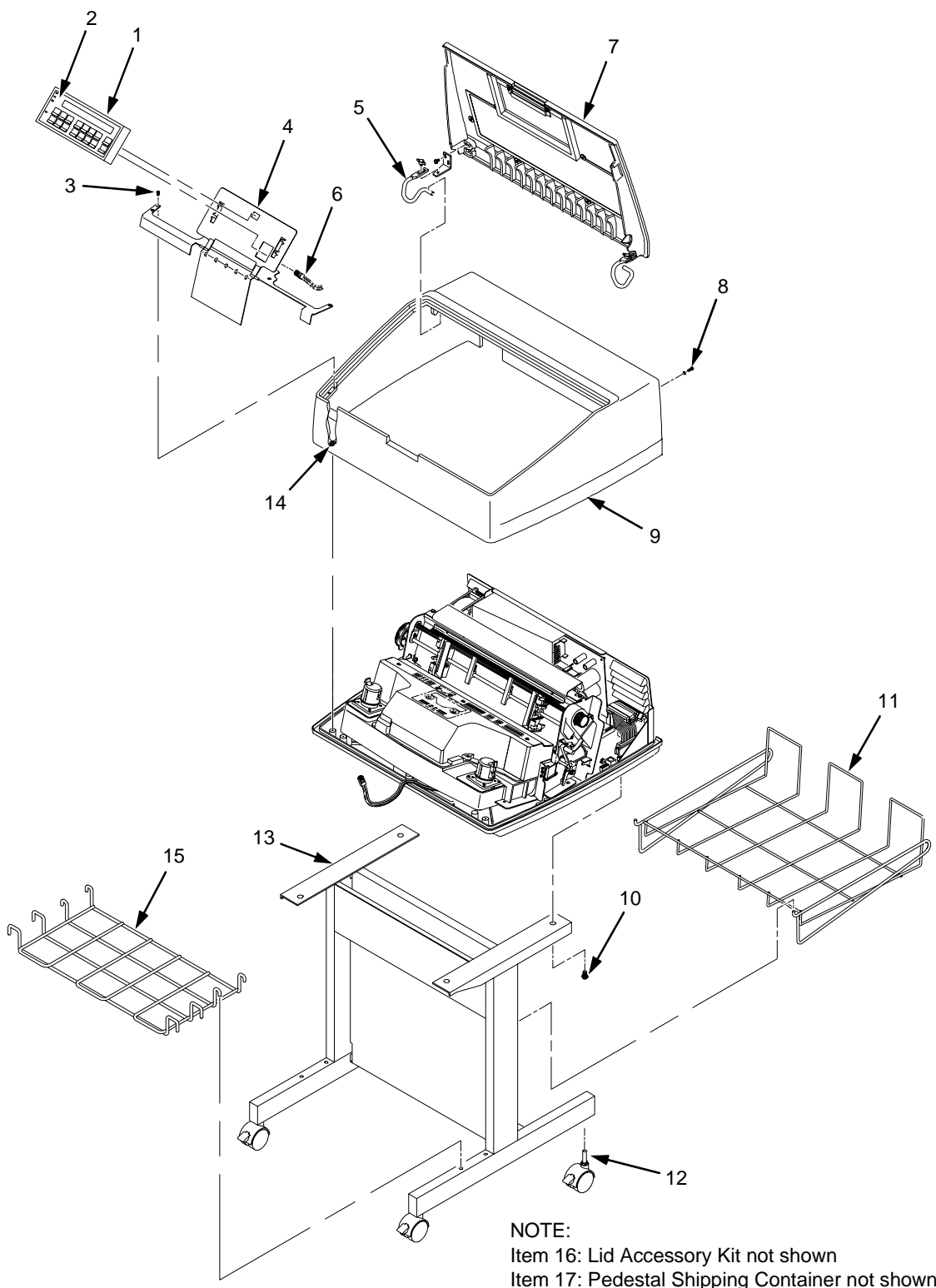


Figure 43. Pedestal Details

Item No.	Part No. (Order No.)	Description	Notes
1	63H5124	Operator Panel, Pedestal	Models 04P, 05P, 08P, 09P
2	57G1598	Operator Panel Overlay	English
	57G1599	Operator Panel Overlay	Spanish
	57G1600	Operator Panel Overlay	French
	57G1601	Operator Panel Overlay	Italian
	57G1602	Operator Panel Overlay	German
	57G1603	Operator Panel Overlay	Dutch
	57G1604	Operator Panel Overlay	Brazilian Portuguese
3	Ref	Screw (5)	6-32x.50
4	63H5125	Bracket, Operator Panel	Models 04P, 05P, 08P, 09P
5	63H5121	Hinge Lid Kit	Models 04P, 05P, 08P, 09P
6	14H5300	Cable Assy, Operator Panel	
7	63H5119	Lid, Pedestal Model	Models 04P, 05P, 08P, 09P
8	Ref	Screw (2)	
9	63H5120	Top Cover	Models 04P, 05P, 08P, 09P
10	Ref	Screw (4)	10-32x.625
11	63H5118	Paper Basket	Models 04P, 05P, 08P, 09P
12	63H7509	Caster, Pedestal	Models 04P, 05P, 08P, 09P
13	63H5117	Pedestal Kit	Models 04P, 05P, 08P, 09P
14	Ref	Screw, Captive (2)	
15	24H8533	Input Tray	Optional item on models 04P, 05P, 08P, 09P
16	63H5122	Lid Accessory Kit	Replacement acoustic seals (Not shown in Figure 13)
17	64H5123	Shipping Container, Pedestal	Models 04P, 05P, 08P, 09P (Not shown in Figure 13)

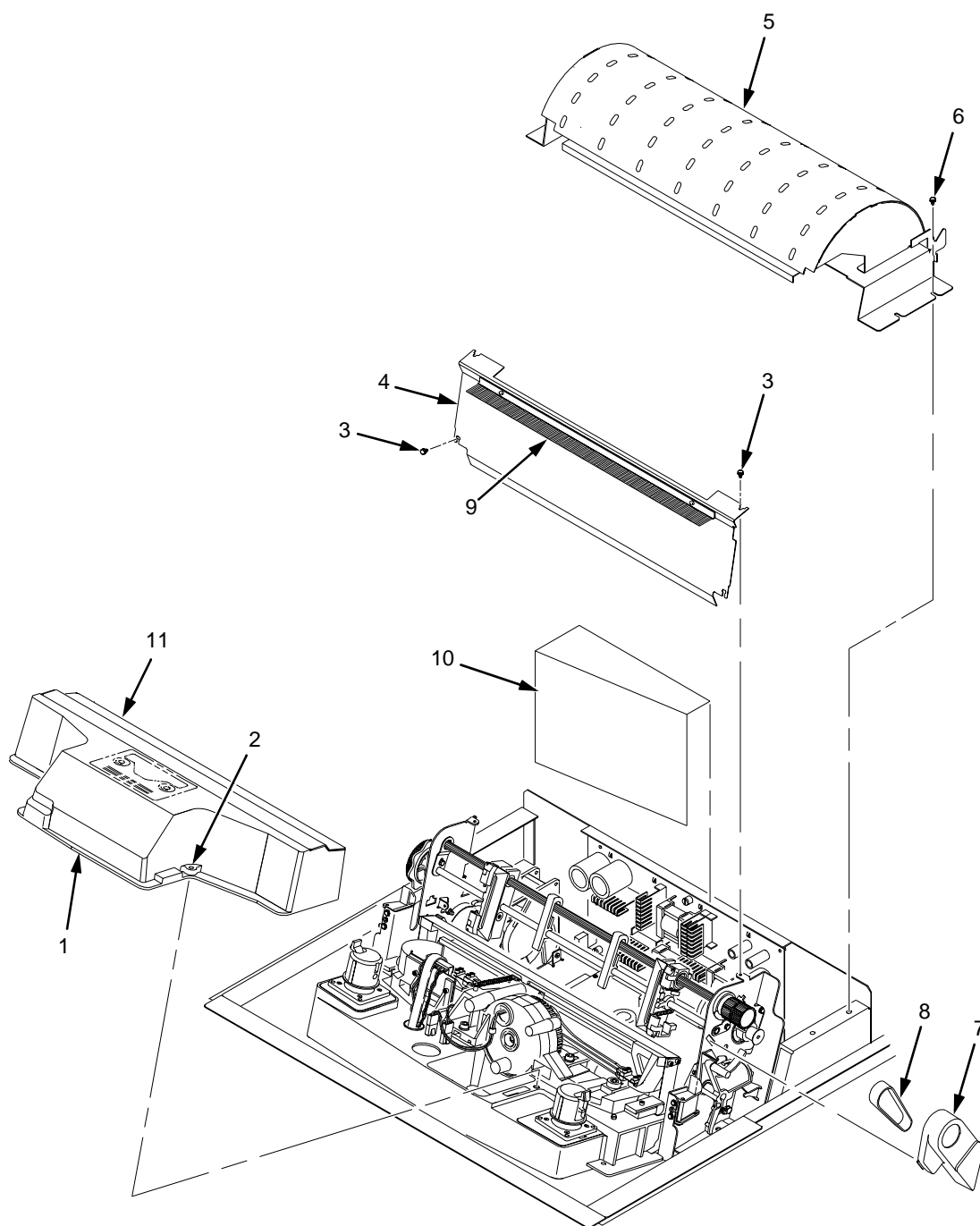


Figure 44. Inside Covers, Cabinet Model

Item No.	Part No. (Order No.)	Description	Notes
1	14H5235	Shroud Assembly, Air	Shuttle Cover Assembly
2	Ref	Screw, Captive (2)	10-24x.62 with O-ring, .125x.250x.06
3	Ref	Screw, Thread Forming (4)	6-32x.25
4	Ref	Barrier Shield	
5	14H5271	Paper Guide Assembly	Models 004, 005, 008, 009, 012, 014
6	Ref	Screw, w/Lock Washer (3)	6-32x.25 and #6 Flat Washer
7	14H5174	Platen/Paper Feed Cover Kit	Paper feed belt cover shown in Figure 44. Platen open belt cover: item 24, page 276.
8	57G1468	Belt, Timing, 050P, 100 Teeth	Paper Feed Belt
9	08H7954	Anti-Static Brush Kit	
10	Ref	Power Supply Shield	Taped to card cage along upper edge
11	14H5179	Paper Scale	

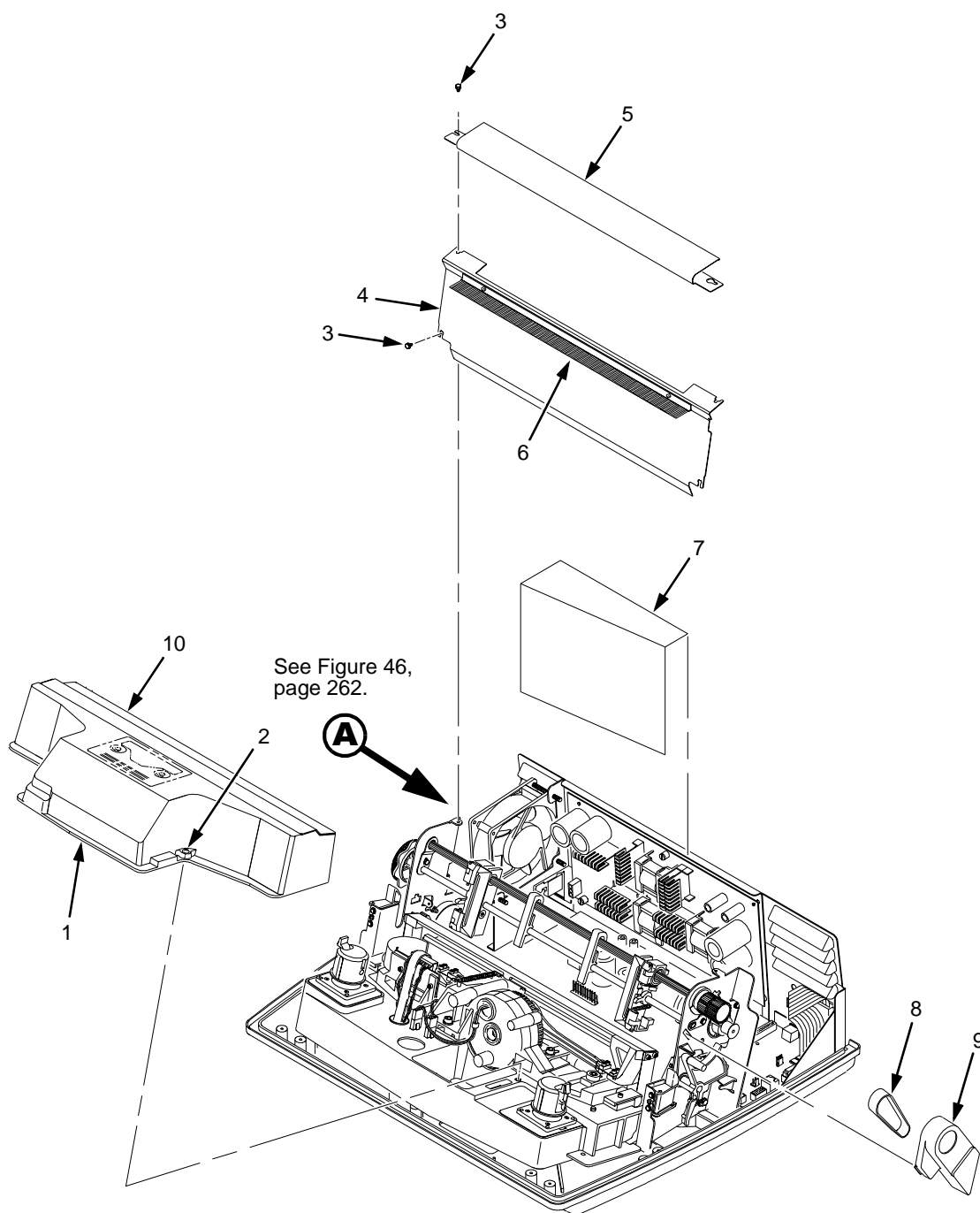


Figure 45. Inside Covers and Card Cage, Pedestal Model

Item No.	Part No. (Order No.)	Description	Notes
1	14H5235	Shroud Assembly, Air	Shuttle Cover Assembly
2	Ref	Screw, Captive (2)	10-24x.62 with O-ring, .125x.250x.06
3	Ref	Screw, Thread Forming (4)	6-32x.25
4	Ref	Barrier Shield	
5	63H5116	Paper Path Assembly	Models 04P, 05P, 08P, 09P
6	08H7954	Anti-Static Brush Kit	
7	Ref	Power Supply Shield	Taped to card cage along upper edge
8	57G1468	Belt, Timing, 050P, 100 Teeth	Paper Feed Belt
9	14H5174	Platen/Paper Feed Cover Kit	Paper feed belt cover shown in Figure 45. Platen open belt cover: item 24, page 276.
10	14H5179	Paper Scale	

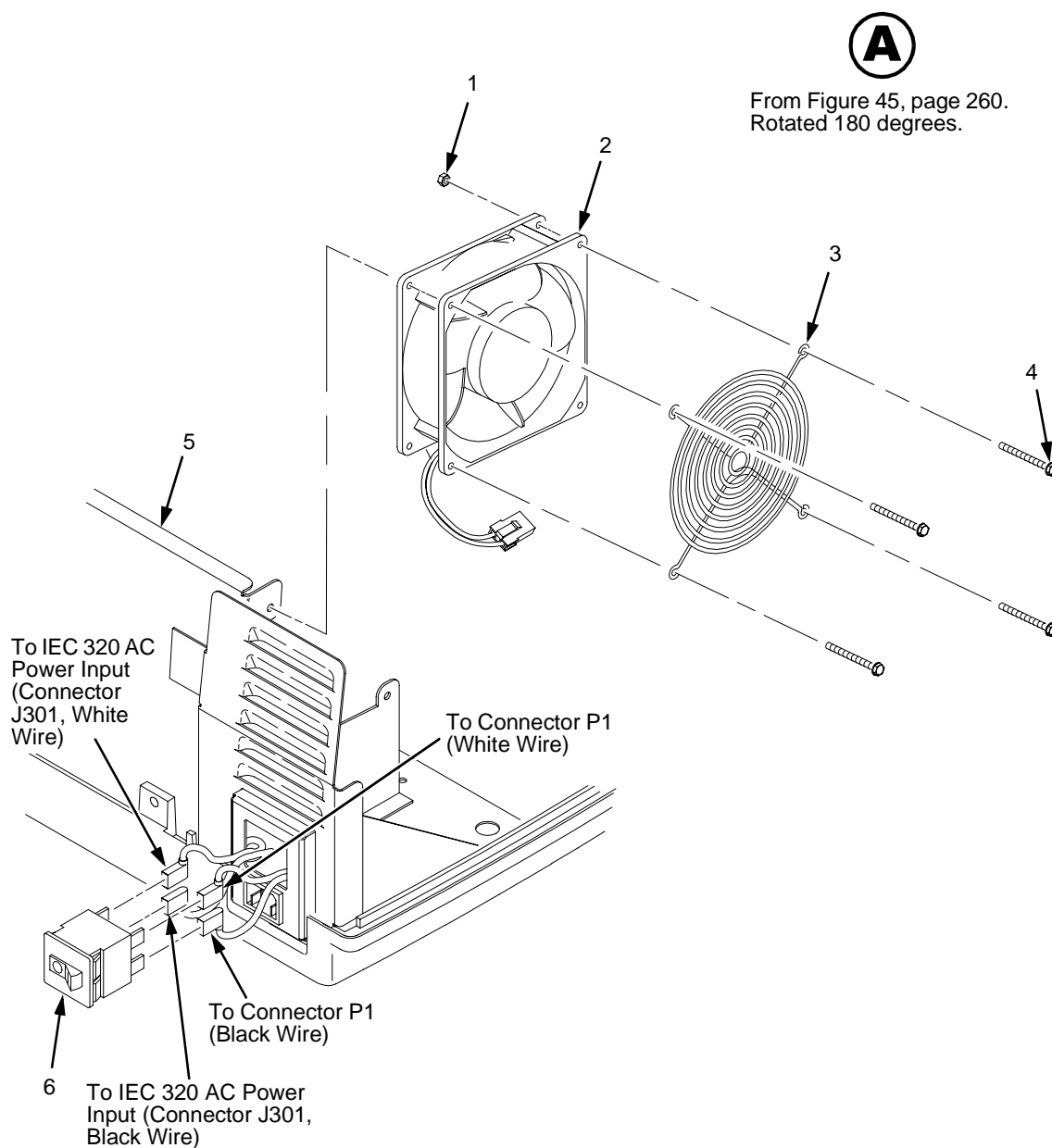


Figure 46. Card Cage Detail, Pedestal Model

Item No.	Part No. (Order No.)	Description	Notes
1	Ref	Nut, 6-32 (1)	Upper right fan corner only
2	57G1440	Card Cage Fan Assembly	Air flow is into card cage
3	Ref	Fan Guard	
4	Ref	Screw, w/Lock Washer (4)	6-32x.1.75
5	Ref	Card Cage, Pedestal	
6	14H5571	Circuit Breaker	



Two places:
Exploded to show
assembly. Do not
remove holddown
clamps and
screws.

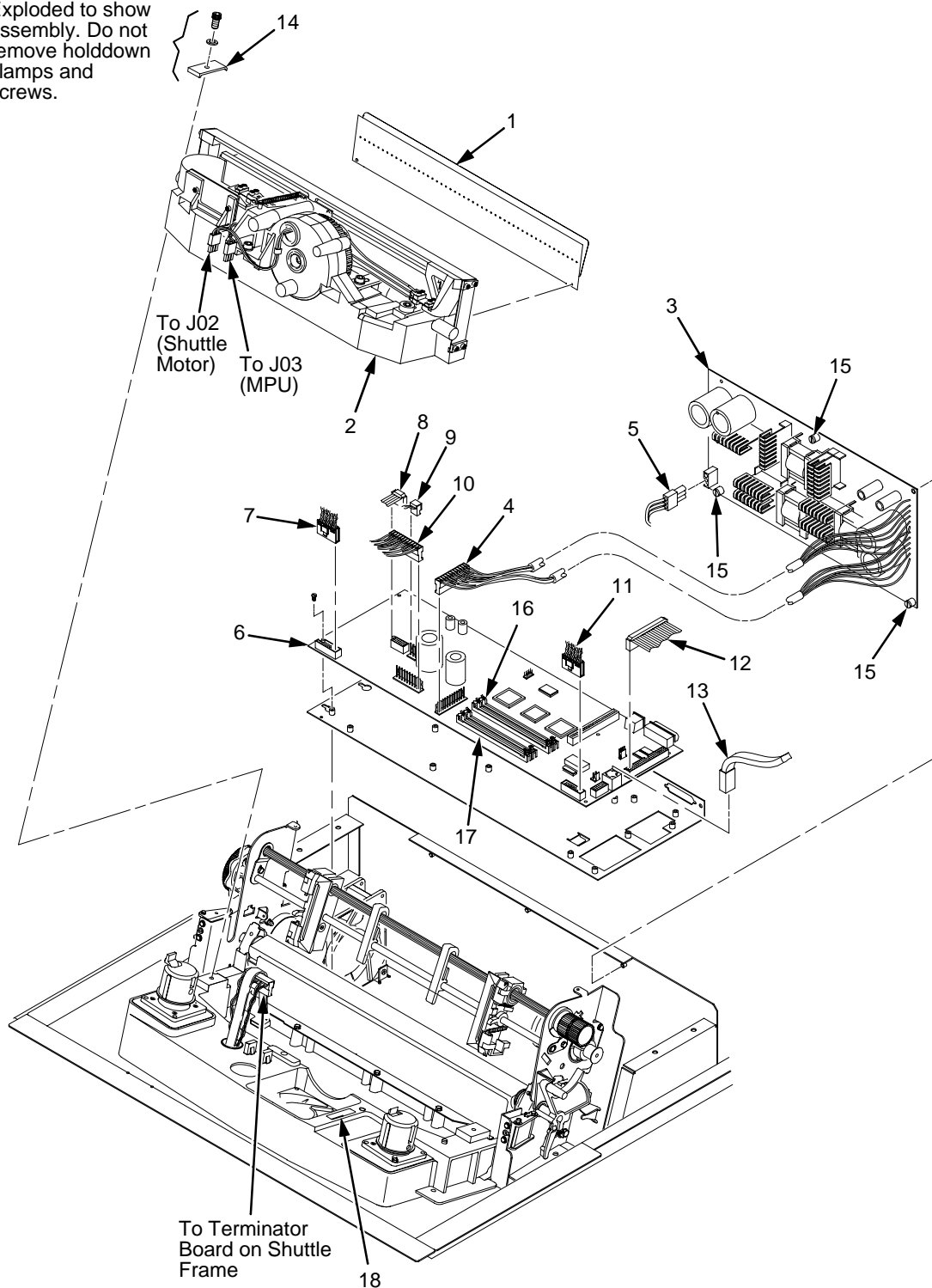


Figure 47. Print Mechanism and Circuit Boards: Early Models

Item No.	Part No. (Order No.)	Description	Notes
1	63H7518	Hammer Bank/Rbn Mask Cover	Models 004, 04P, 005, 05P
	63H7519	Hammer Bank/Rbn Mask Cover	Models 008, 08P, 009, 09P
	63H7520	Hammer Bank/Rbn Mask Cover	Models 012, 014
2	14H5274	Shuttle Frame Assembly	Models 004, 04P
	24H8648	Shuttle Frame Assembly	Models 005, 05P
	14H5516	Shuttle Frame Assembly	Models 008, 08P
	24H9625	Shuttle Frame Assembly	Models 009, 09P
	14H5517	Shuttle Frame Assembly	Model 012
	90H3269	Shuttle Frame Assembly	Model 014
	14H5275	Hammer Spring Assembly	Models 004, 04P, 005, 05P
	14H5512	Hammer Spring Assembly	Models 008, 08P, 009, 09P
	14H5513	Hammer Spring Assembly	Models 012, 014
3	14H5644	Power Supply PCBA	Models 004, 04P, 005, 05P, 008, 08P, 012
	90H3268	Power Supply PCBA	Models 009, 09P, 014
4	Ref	P101 Cable Connector	
5	Ref	Cable Assy, AC-In, Power Supply	Part of Field Kit, AC Assy 14H5289
6	14H5643	Controller Board, CMX, V5.0	All models 004 and 04P. Models 008 and 012 with Ser. Nos. 01AXXXX, 01BXXXX and 01CXXXX
	24H8647	Controller Board, CMX, V5.5, 25 MHz	All models 005, 05P, and 08P. Models 008 and 012 with Ser. Nos. 01DXXXX, 01EXXX, and higher. All models 009, 09P.
	90H3271	Controller Board, CMX, V5.5, 40 MHz	Model 014, 050, P50, 010, P10, 015
7	Ref	Motor Sensor, Left, Cable Assy	Housing Connector Kit 14H5288
8	Ref	Hammer Bank Logic Cable Assy	
9	Ref	Shuttle Motor Cable Assy	
10	Ref	Hammer Bank Power Cable Assy	
11	Ref	Motor Sensor, Right, Cable Assy	Housing Connector Kit 14H5288
12	14H5287	Centronics I/O Cable Assy	Optional cable assembly
	14H5522	Centronics/Dataproducts Adapter	
13	Ref	Control Panel Cable Assy	
14	14H5211	Clamp, Shaft, Receiving	
15	Ref	Screw, Captive, Power Supply (3)	



Item No.	Part No. (Order No.)	Description	Notes
16	Ref	SIMM, Flash Memory	See also page 217
17	Ref	SIMM, DRAM	See also page 217
18	14H5282	Switch Assembly, Cover Open	

(Illustrated parts lists continue on next page.)



Two places:
Exploded to show
assembly. Do not
remove holddown
clamps and
screws.

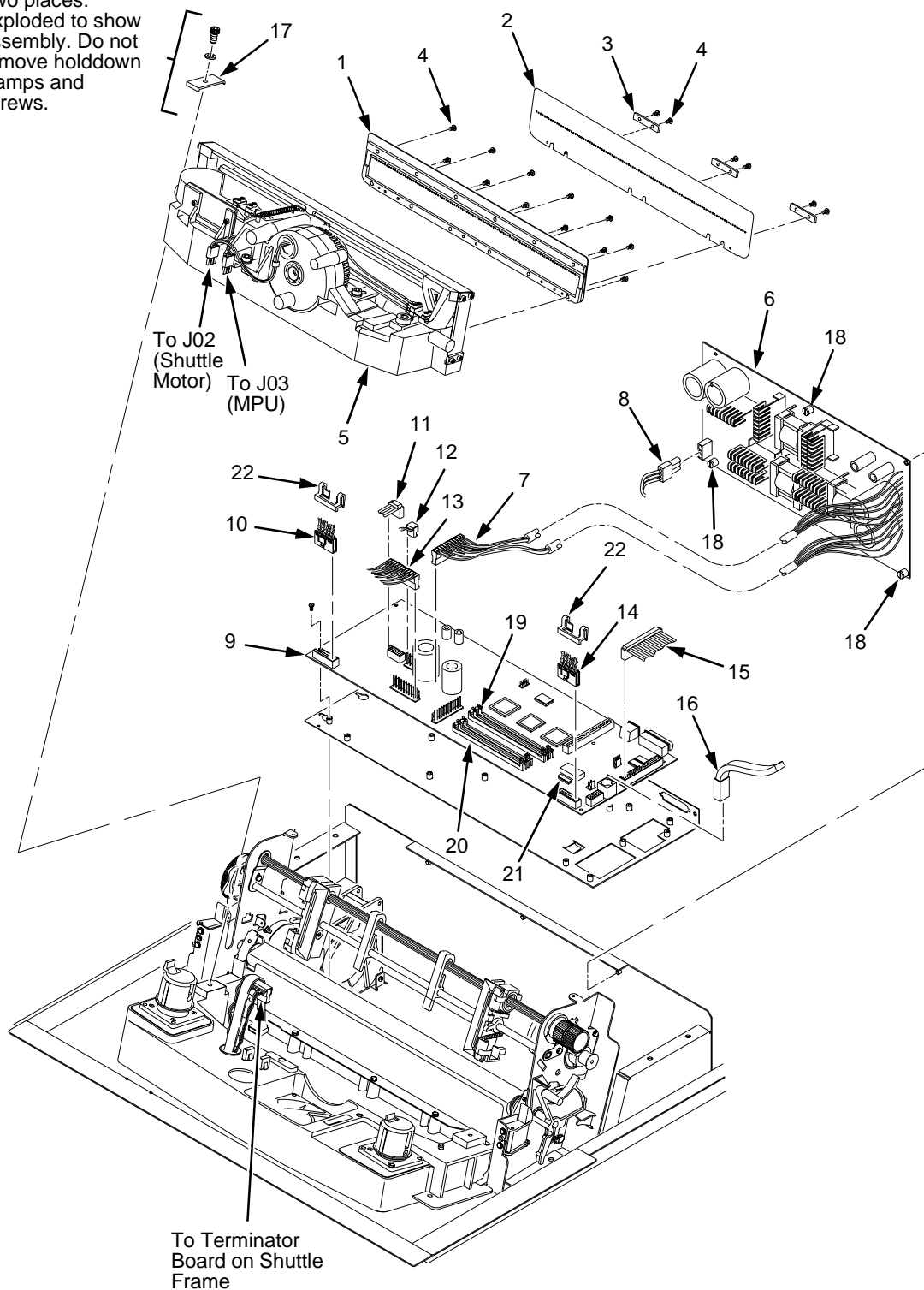


Figure 48. Print Mechanism and Circuit Boards: Later Models

Item No.	Part No. (Order No.)	Description	Notes
1	24H8872 24H8886 24H8924 63H7520	Hammer Bank Cover Assy, 500 Hammer Bank Cover Assy, 1000 Hammer Bank Cover Assy, 1500 Hammer Bank Cover Assy, Hanzi	Models 050, P50 Models 010, P10 Model 015 Models C05, C5P
2	24H8828 24H8844 24H8858	Ribbon Mask, 500 Ribbon Mask, 1000 Ribbon Mask, 1500	Models 050, P50 Models 010, P10 Model 015
3	Ref	Ribbon Mask Clamp Plate (3)	
4	Ref	Screw, Torx T-10 (18)	12 for hammer bank cover 6 for ribbon mask
5	24H8925 24H8927 24H8929 24L5207 24H8931 24H8932 24H8933 24L5209	Shuttle Frame Assembly, 500 Shuttle Frame Assembly, 1000 Shuttle Frame Assembly, 1500 Shuttle Frame Assembly, Hanzi Hammer Spring Field Kit, 500 Hammer Spring Field Kit, 1000 Hammer Spring Field Kit, 1500 Hammer Spring Field Kit, Hanzi	Models 050, P50 Models 010, P10 Model 015 Models C05, C5P Models 050, P50 Models 010, P10 Model 015 Models C05, C5P
6	90H3268	Power Supply PCBA	
7	Ref	P101 Cable Connector	
8	Ref	Cable Assy, AC-In, Power Supply	Part of Field Kit AC Assy 14H5289
9	90H3271	Controller Board, CMX, V5.5, 40 MHz	Models 050, P50, 010, P10, 014, 015, C05, C5P
10	Ref	Motor Sensor, Left, Cable Assembly	Housing Connector Kit 14H5288
11	Ref	Hammer Bank Logic Cable Assembly	
12	Ref	Shuttle Motor Cable Assembly	
13	Ref	Hammer Bank Power Cable Assy	
14	Ref	Motor Sensor, Right, Cable Assembly	Housing Connector Kit 14H5288
15	14H5287 14H5522	Centronics I/O Cable Assembly Centronics/Dataproducts Adapter	Optional cable assembly
16	Ref	Control Panel Cable Assembly	
17	14H5211	Clamp, Shaft, Receiving	
18	Ref	Screw, Captive, Power Supply (3)	



Item No.	Part No. (Order No.)	Description	Notes
19	Ref	SIMM, Flash Memory	See also page 217
20	Ref	SIMM, DRAM	See also page 217
21	14H5282	Switch Assembly, Cover Open	
22	02N8261	Connector Clip	

(Illustrated parts lists continue on next page.)

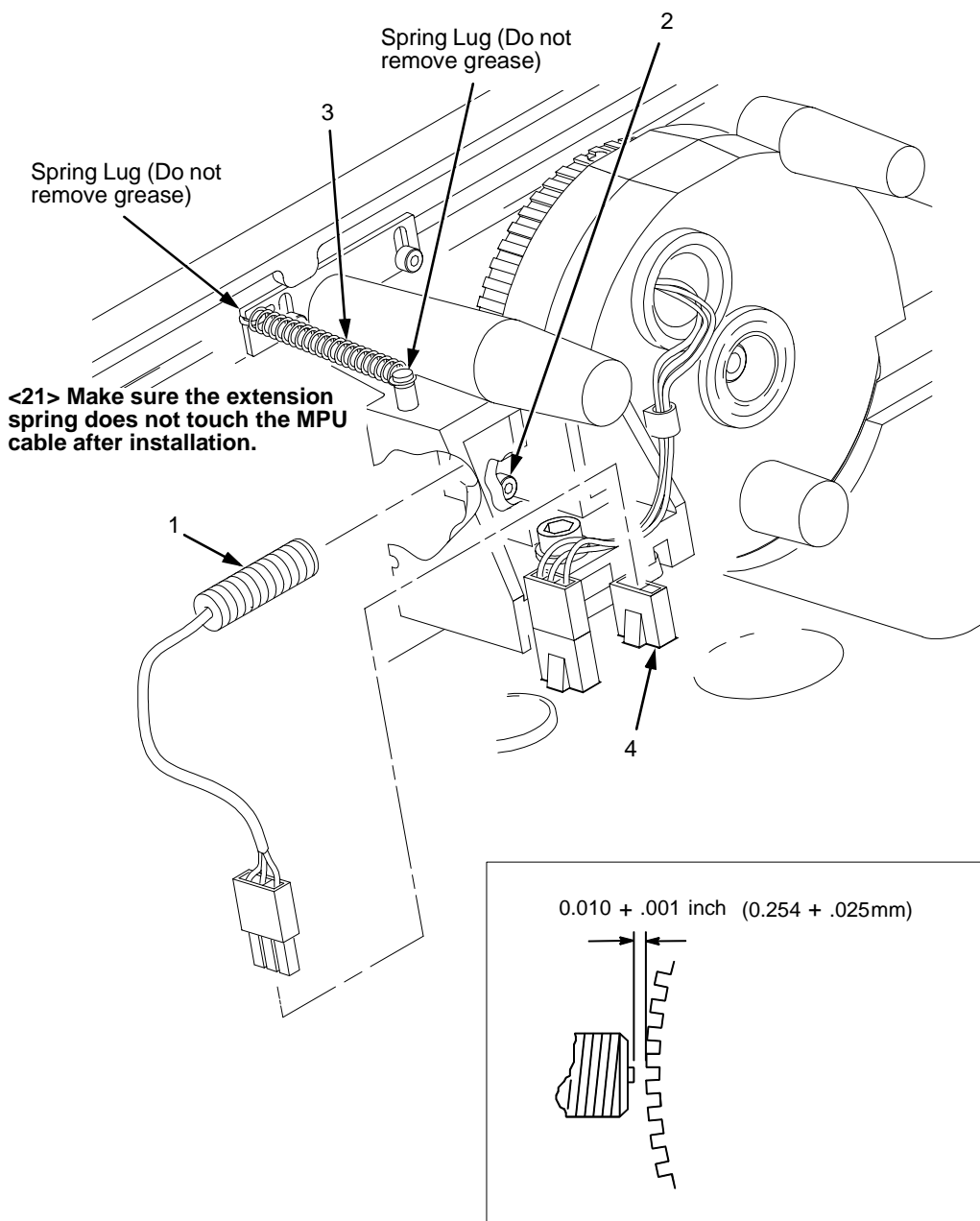
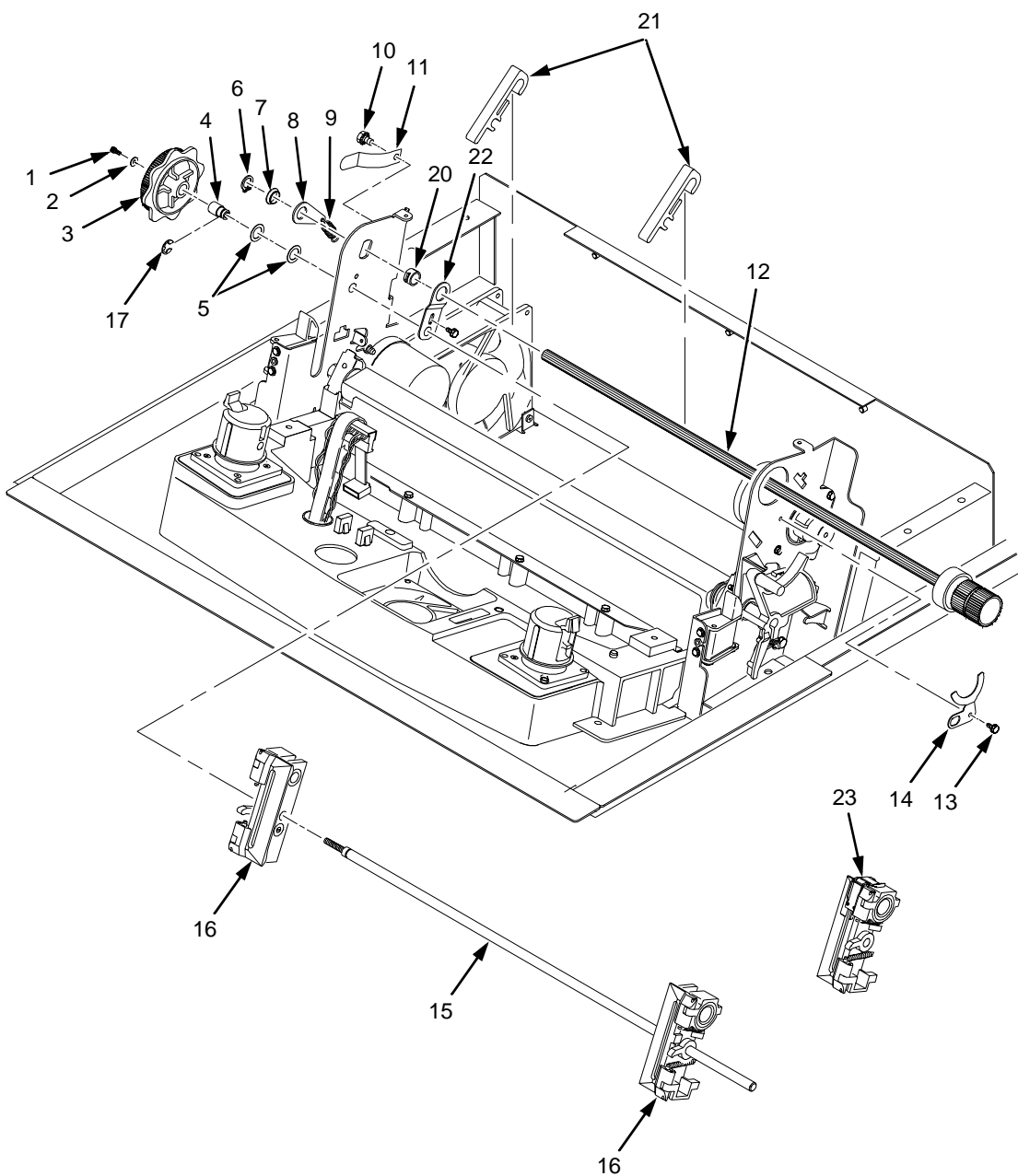


Figure 49. Magnetic Pickup Unit (MPU) and Extension Spring

Item No.	Part No. (Order No.)	Description	Notes
1	57G1476	Magnetic Pickup Assy (MPU)	
2	Ref	Screw, Socket Cap, 6-32x.38	
3	30H3985	Extension Spring	
4	14H5329	Cable Assembly, MPU	



NOTE

Item 18: Tractor Shaft Hardware Kit not shown

Item 19: Tractor Shaft Kit not shown

Figure 50. Tractor Shafts

Item No.	Part No. (Order No.)	Description	Notes
1	Ref	Screw, Socket Cap, 4-40x.25	Part of item 19
2	Ref	Washer, Flat #4	Part of item 19
3	Ref	Knob, Tractor Adjust	Part of item 19
4	Ref	Bushing, Tractor Adjust	Part of item 19
5	Ref	Washer, Curved Spring (2)	Part of item 19
6	Ref	Ring, Grip	Part of item 18
7	Ref	Bearing, Nylon .626	Part of item 18
8	Ref	Link Spring	Part of item 18
9	Ref	Spring, Extension 1.00L	Part of item 18
10	Ref	Screw, Hex w/Lock Washer, 4-20x.50	Part of item 11
11	57G1521	Ground Clip, Splined Shaft	
12	57G1460	Splined Shaft Assembly	
13	Ref	Screw, Thread Forming, 6-32x.25	Part of item 18
14	Ref	Clamp, Bearing	Part of item 18
15	Ref	Tractor Support Shaft	Part of item 19
16	57G1466	Tractor Set	Includes L and R tractors
17	Ref	E-Ring	Part of item 19
18	14H5217	Tractor Shaft Hardware Kit	
19	14H5214	Tractor Shaft Kit	
20	Ref	Bushing	Part of item 18
21	24H8593	Paper Support (2)	
22	Ref	Link, Splined Shaft Skew Adjustment	
23	01P4611	Tractor Assembly, Power Stacker	Installed at factory on models with power stacker.

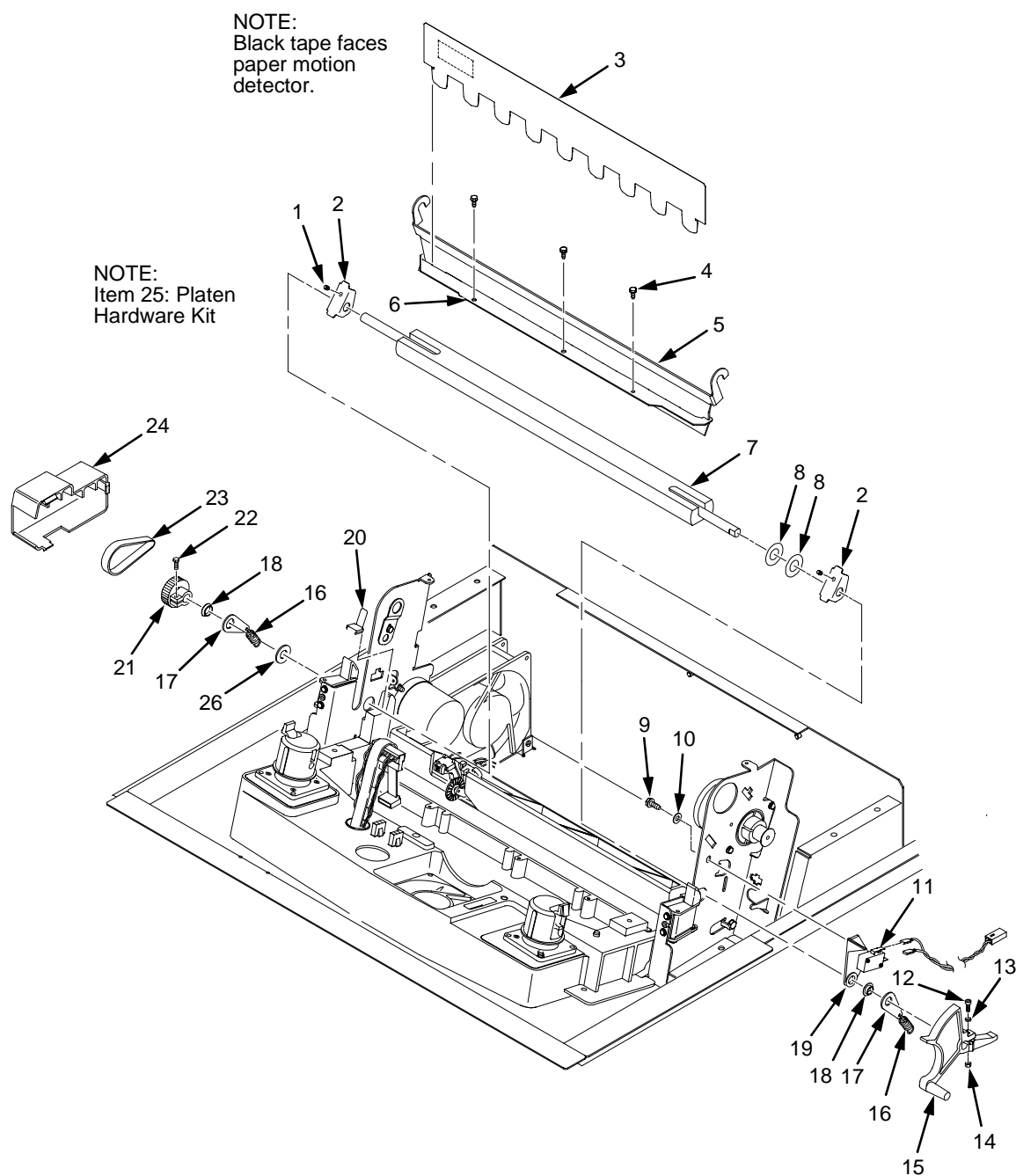


Figure 51. Platen

Item No.	Part No. (Order No.)	Description	Notes
1	Ref	Setscrew	Part of item 25
2	Ref	Bracket, Platen (2)	Part of item 25
3	57G1469	Ironer Assembly	Reverser Paper Feed
4	Ref	Screw, Thread Forming (3)	6-32x.25
5	57G1571	Bracket, Ironer	
6	Ref	Plate, Ironer	
7	08H7936	Platen Assembly	
8	Ref	Washer, Flat (2)	Part of item 25
9	Ref	Screw (2)	Part of item 11
10	Ref	Washer, Flat #4 (2)	Part of item 11
11	14H5280	Platen Switch Kit	Platen Interlock Switch
12	Ref	Screw, Socket Cap, 6-32x.75	Part of item 15
13	Ref	Washer	Part of item 15
14	Ref	Nut	Part of item 15
15	63H7478	Platen Lever Kit	
16	Ref	Spring, Extension 1.12L	Part of item 25
17	Ref	Link, Spring	Part of item 25
18	Ref	Bearing, Nylon .376	Part of item 25
19	Ref	Bracket, Switch Mount	Part of item 11
20	Ref	Wear Saddle, Platen (2)	Part of item 25
21	57G1514	Platen Pulley, Driven	
22	Ref	Screw, Socket Cap, 6-32x.44	Part of item 21
23	57G1467	Belt, Timing, 312W, 87 Teeth	Platen Open Belt
24	14H5174	Platen/Paper Feed Cover Kit	Platen open belt cover shown in Figure 51. Paper feed belt cover: page 258, item 7.
25	14H5169	Platen Hardware Kit	
26	Ref	Platen Washer	Part of item 25

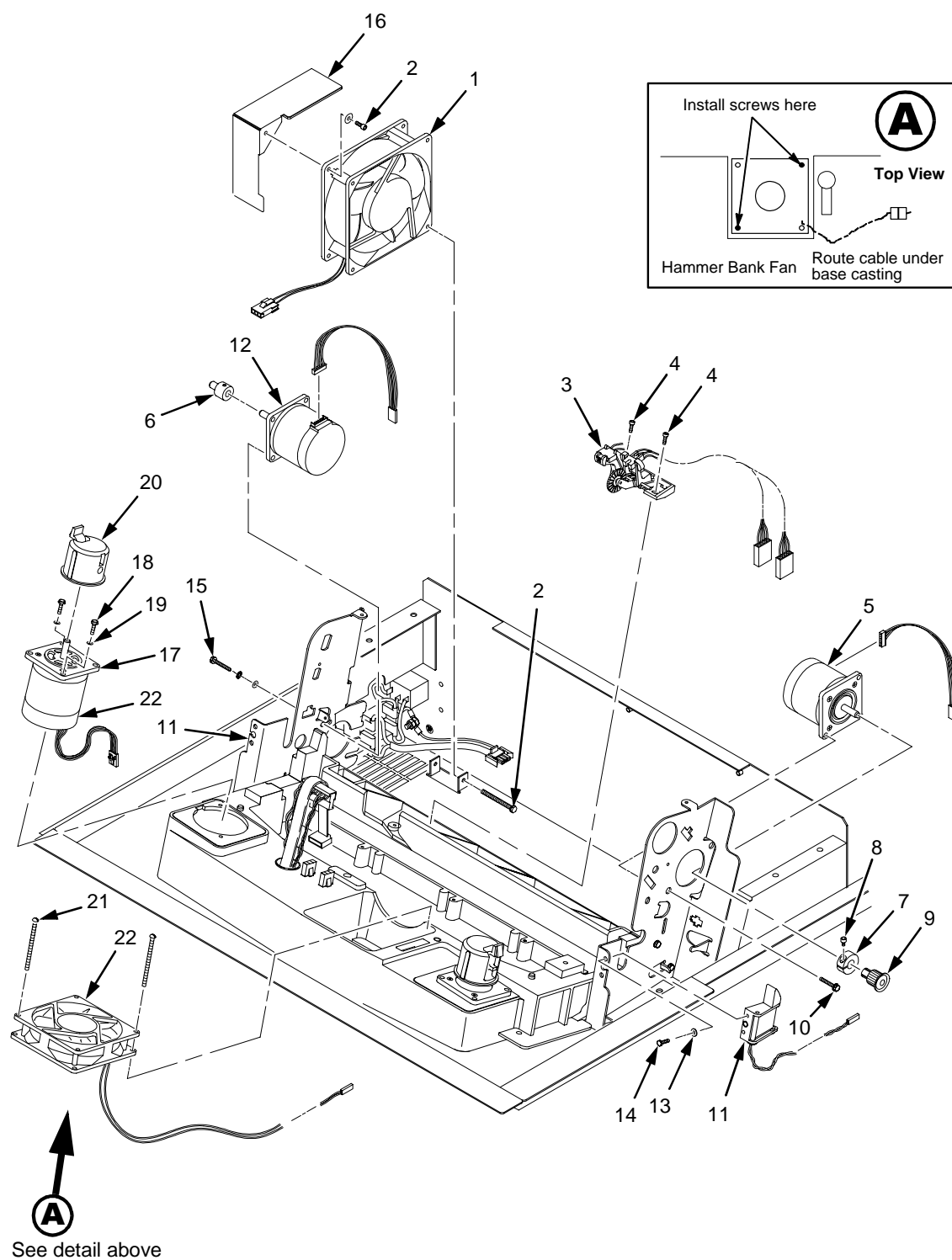


Figure 52. Motors, Card Cage Fan, and Paper Detector Switch

Item No.	Part No. (Order No.)	Description	Notes
1	57G1440	Fan Assembly	Air flow is into card cage
2	Ref	Screw, w/Lock Washer (3)	Two 6-32x1.75 on botton One 6-32x0.50 on top left
3	14H5281 14H5570	Paper Detector Switch Assy Paper Detector Switch Assy	Standard Black Back forms
4	Ref	Screw, Thread Forming, 6-32x.375	
5	14H5520	Paper Feed Motor Assy	Includes items 7 through 9
6	08H7934	Motor Pulley, Platen Open	Part of Platen Open Motor Assy 57G1509 and includes collar setscrew 6-32x.25
7	Ref	Collar	Part of item 9
8	Ref	Screw, Socket Head, 6-32x.51	
9	57G1421	Motor Pulley, Paper Feed	
10	Ref	Screw, Hex w/Lock Washer (2)	10-32x.50
11	24H8894	Ribbon Guide Kit	Includes left and right ribbon guides
12	14H5154	Platen Open Motor Assembly	Includes item 6
13	Ref	Washer, Flat #4 (2)	
14	Ref	Screw, Hex w/Lock Washer (2)	4-40x.38
15	Ref	Screw, Hex w/Lock Washer (2)	10-32x.50
16	Ref	Shield, Card Cage Fan	
17	14H5521	Motor Assembly, Ribbon	
18	Ref	Screw, Hex w/Lock Washer (2)	6-32x.50
19	Ref	Washer, Flat #6 (2)	
20	57G1479	Ribbon Hub Kit	
21	Ref	Screw, w/Lock Washer (2)	6-32x1.25
22	14H5159	Hammer Bank Fan Assembly	Air flow is up
23	Ref	Boot	Cabinet models only

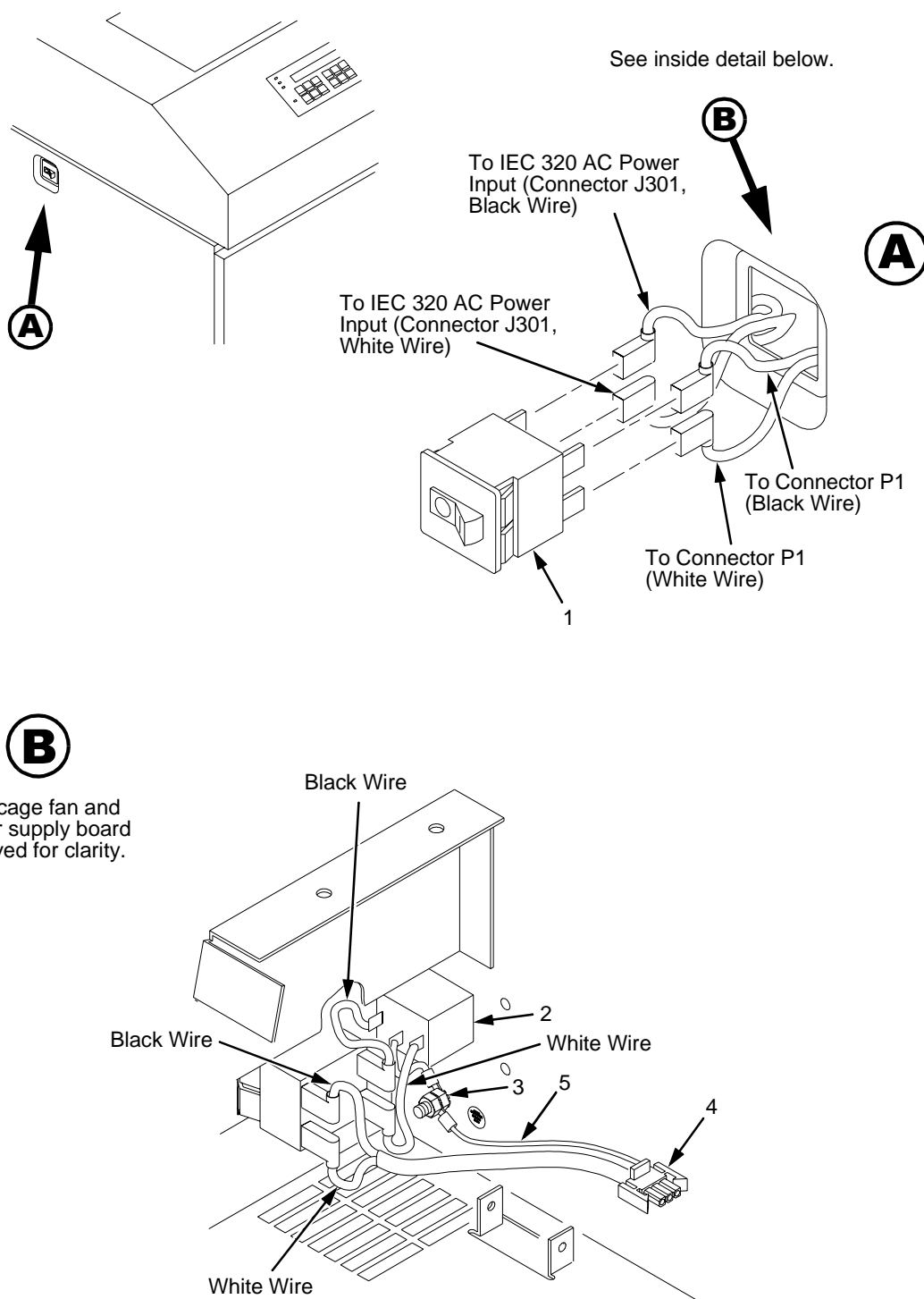


Figure 53. Circuit Breaker

Item No.	Part No. (Order No.)	Description	Notes
1	14H5571	Circuit Breaker	
2	Ref	IEC 320 AC Power Connector	Connector J301
3	Ref	Chassis Ground Stud	
4	Ref	Connector P1	To power supply board connector J1 AC
5	Ref	Cable Assy, AC-In, Power Supply	Part of Field Kit, AC Assy 14H5289

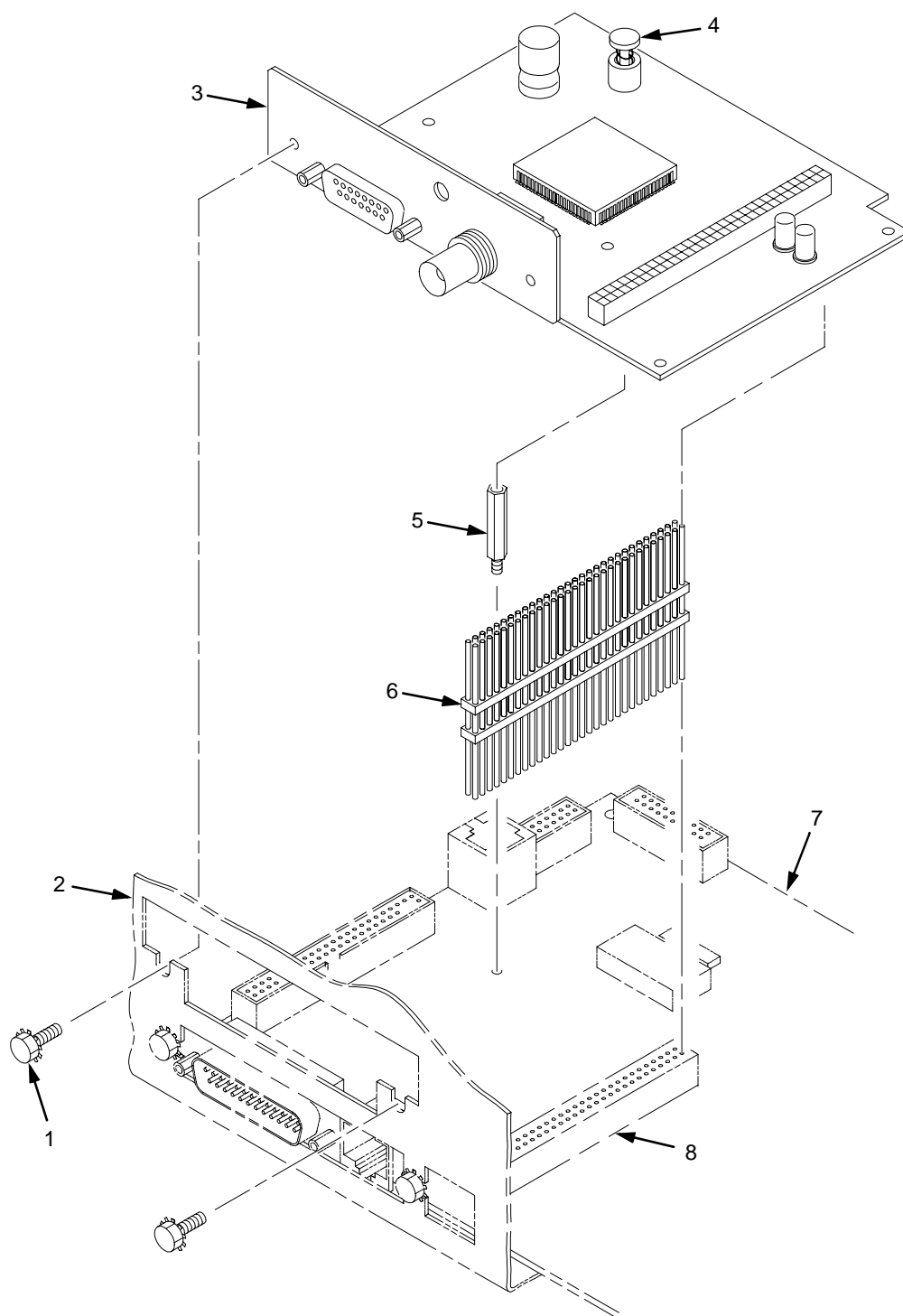


Figure 54. IBM Coax/Twinax Expansion Board

Item No.	Part No. (Order No.)	Description	Notes
1	Ref	Screw (2)	
2	Ref	Card Cage	
3	24H9011	IBM Coax/Twinax Expansion	
4	Ref	Screw, Captive	
5	Ref	Standoff, Hex, 3/16 inch	M/F, .813 Lg.
6	24H8535	Adapter, Expansion Connector	60-pin
7	Ref	CMX Controller Board	
8	Ref	Controller Board Connector J111	

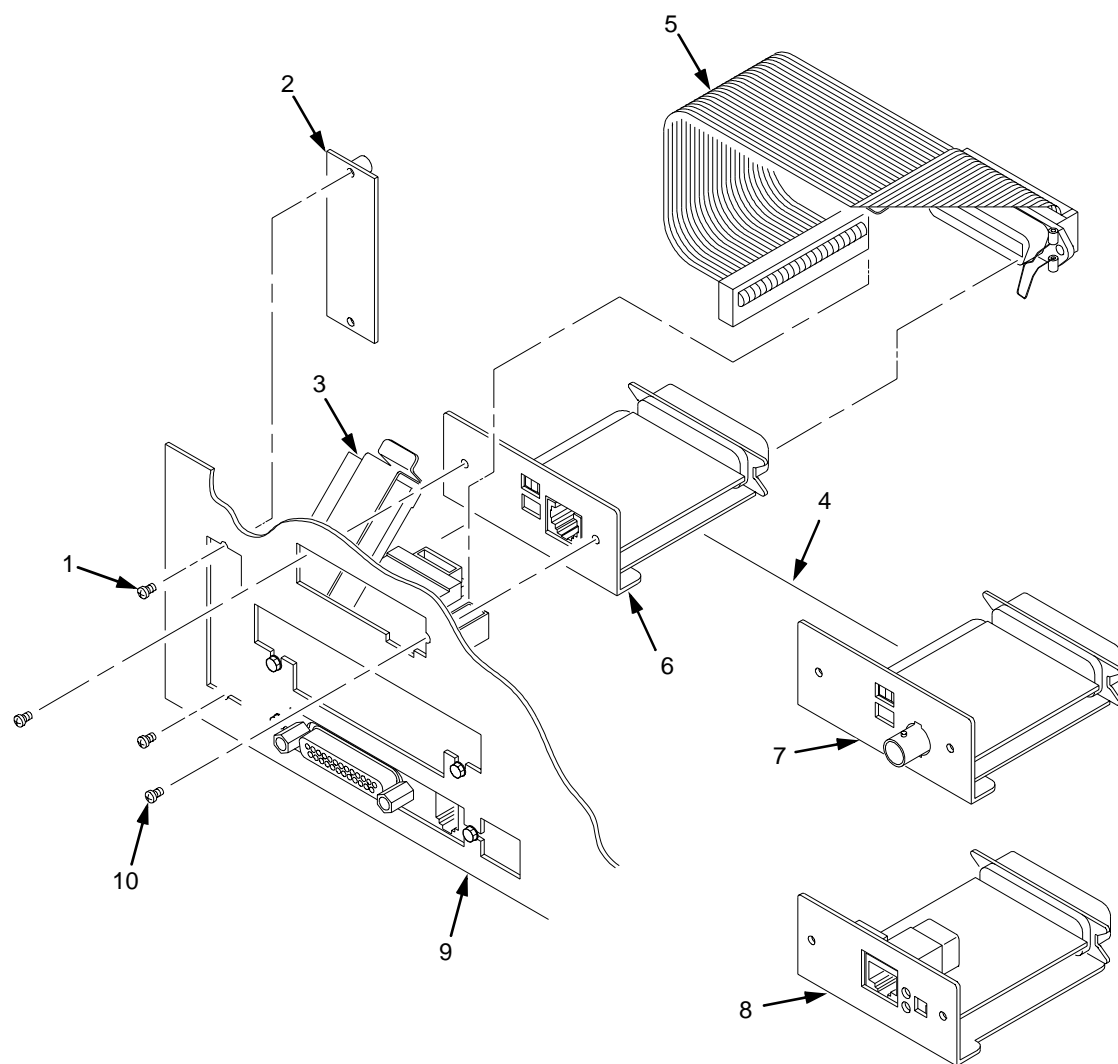


Figure 55. Ethernet Interface Assemblies

Item No.	Part No. (Order No.)	Description	Notes
1	Ref	Screw, Connector Cover (2)	See also Appendix I
2	Ref	Cover Plate, Centronics	
3	Ref	Ferrite Clamp	
4	Ref	CMX Controller Board	
5	14H5287	Centronics I/O Cable Assembly	
6	24H8995	Ethernet LAN PCBA, 10Base-T	
7	24H8994	Ethernet LAN PCBA, 10Base2	
8	02N8315	Ethernet LAN PCBA, 10/100Base-T	
9	Ref	Rear of Card Cage	
10	Ref	Screw (2)	