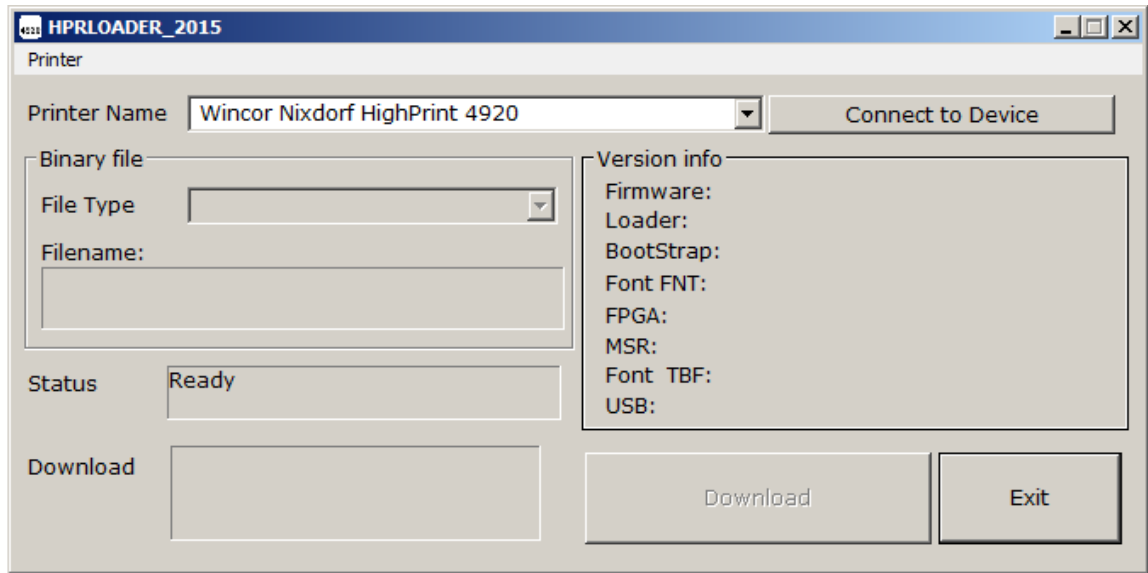


## HPRLoader User-Guide:

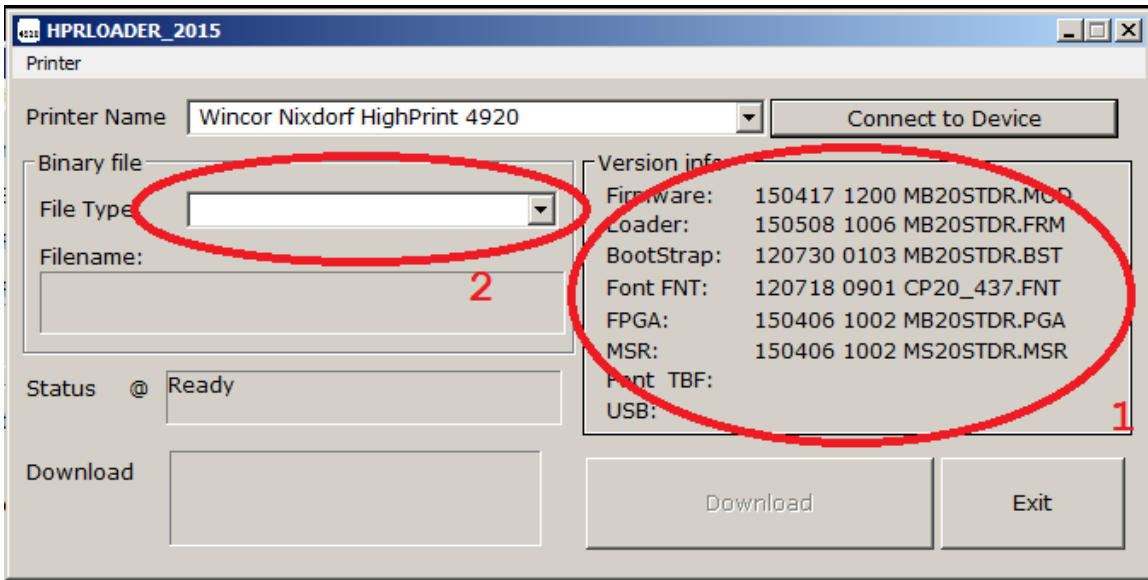
Please follow the steps below.

1. Before you can use this application, you have to install the printer driver first (HPR4920 driver). During driver installation you should select the interface that you are going to use to load firmware or font. You may check on how to install the driver from product CD or User Manual.
2. After you done the installation, run the HPRLoader.exe
3. The software will list down the list of printer you have installed into the PC.



4. Choose Printer Name on the driver you have preinstalled. follow by "Connect to Device"
5. Assume your printer is online mode, and connection is connected to PC [USB/RS232], once "Connect to Device" is pressed, you will notice the printer is doing the initialization.
6. If it is not, probably the driver or the connection is wrong. try to do a test print to the driver or seek for expert advice.

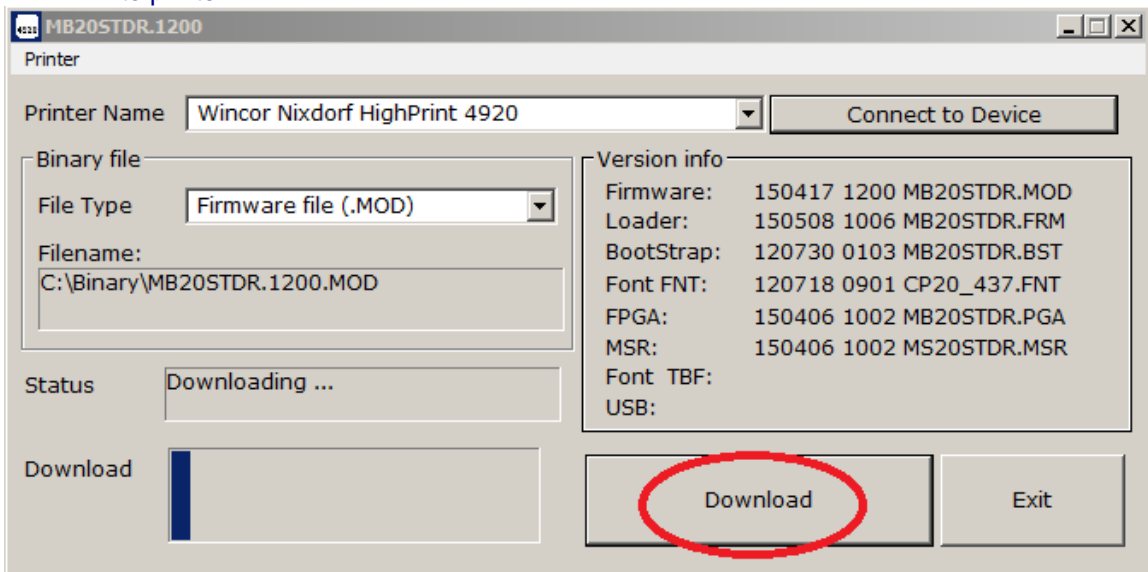
7. If 6 is ok, the following screen will be displayed:



8. A list of firmware version/font version is displayed.

9. Select "file type" to locate any binary format you want to download toward printer.

10. Once the file is selected, click download, the HPRLoader 2015 will download the code into printer:



11. Do the same for the rest of binary file such as FPGA/FNT/FRM/..etc