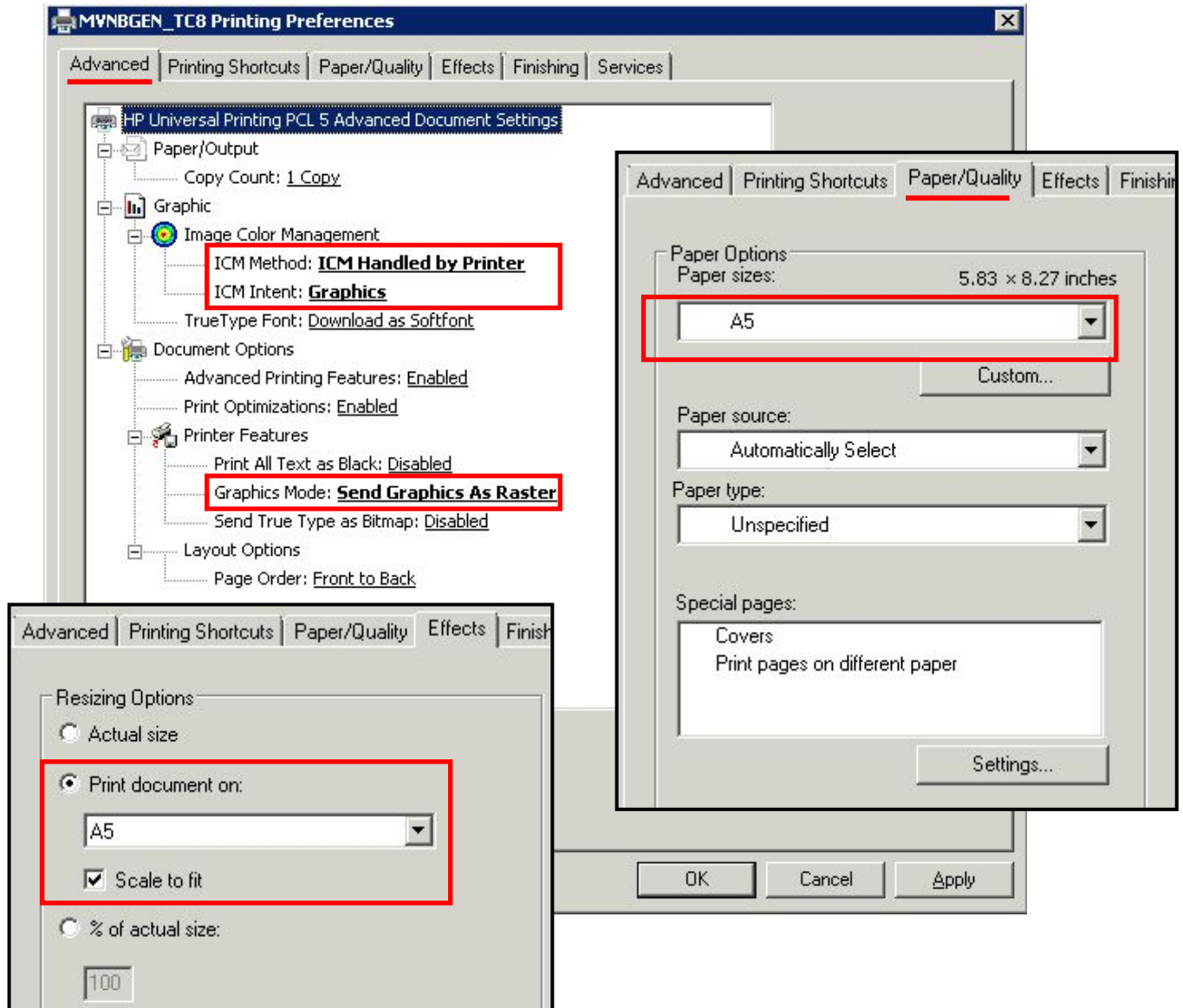


## Printing Preferences:

Go to the **Printer Properties** → **General Tab** → **Preferences** button:



## Printing Defaults:

Go to the **Printer Properties** → **Advanced Tab** → **Printing Defaults** button (same change):

- **Advanced Tab:**
  - ICM Method: **ICM Handeled by Printer**
  - ICM Intent: **Graphics**
  - Graphics Mode: **Send Graphics As Raster**
- **Paper/Quality Tab:**
  - Paper Options: **A5**
- **Effects Tab:**
  - Print Document on: **A5**
  - Scale to fit: **Enabled**