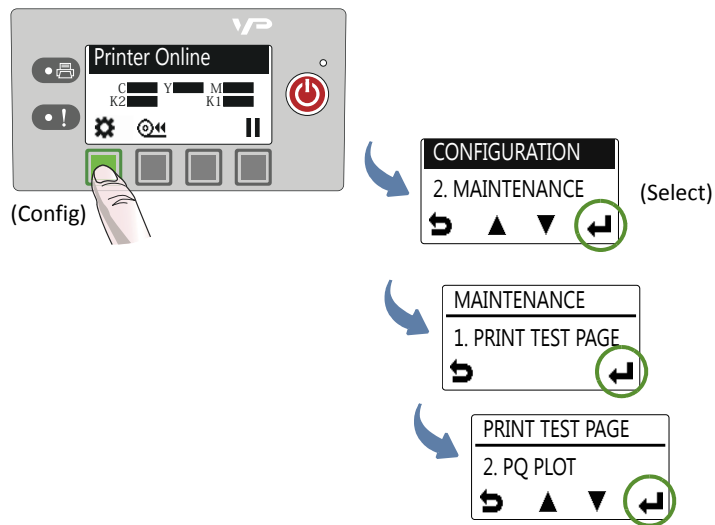


## 7 Print test label

Load 4" x 4" or larger labels.  
Select the media type in the EWS Diagnostics page.



Sample PQ plot



Verify the following on the PQ plot:

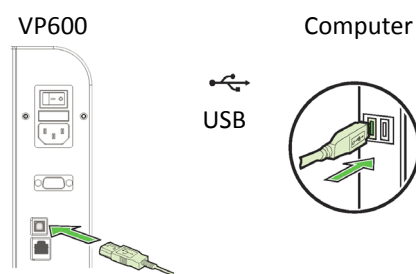
- Lines are printed in the order yellow, black, cyan, black and magenta.
  - Lines are clearly defined with no white dots or streaks.
  - Vertical dashed lines are straight.
- Bars are printed in the order yellow, black, cyan, black and magenta.
  - Bars are clearly defined with no white dots or streaks.
  - No color mixing in the bars.
- Text is sharp, crisp, and legible.
- Lines are printed in the order yellow, black, cyan, black and magenta.
  - Lines are clearly defined with no white dots or streaks.

## 8 Install printer driver

To connect printer to computer

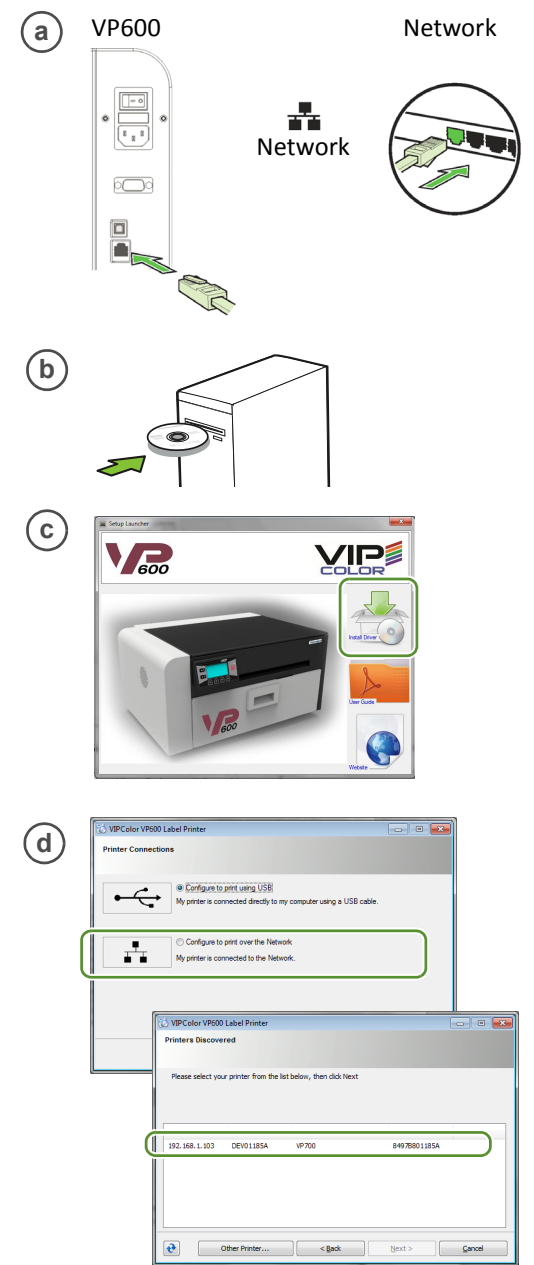


(d) Connect USB cable when prompted

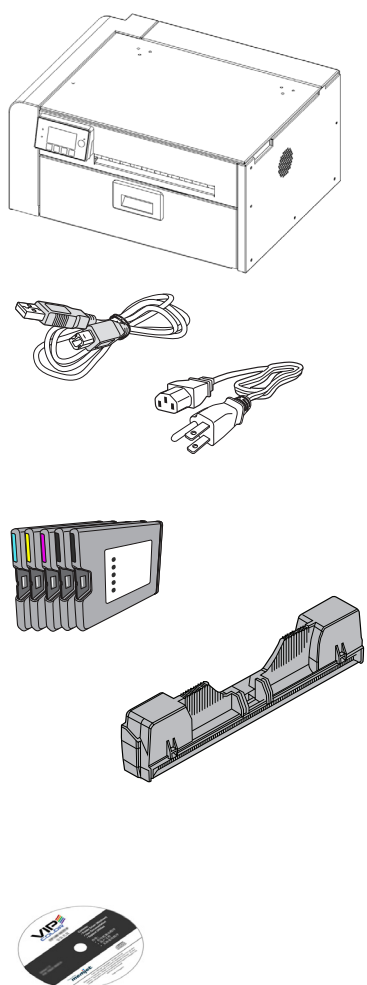


To connect printer to network

DHCP is enabled by default. If it is not available, see "Additional Networking Information".

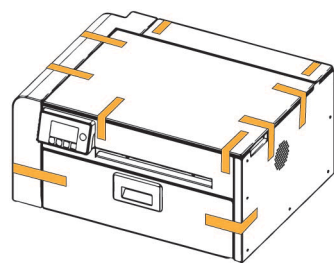


## Start

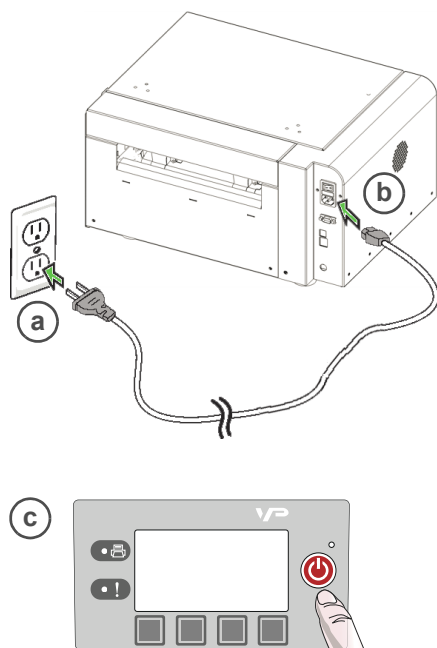


**NOTE:**  
Please ask your reseller for the printer driver software.  
Also check with your reseller about warranty registration.

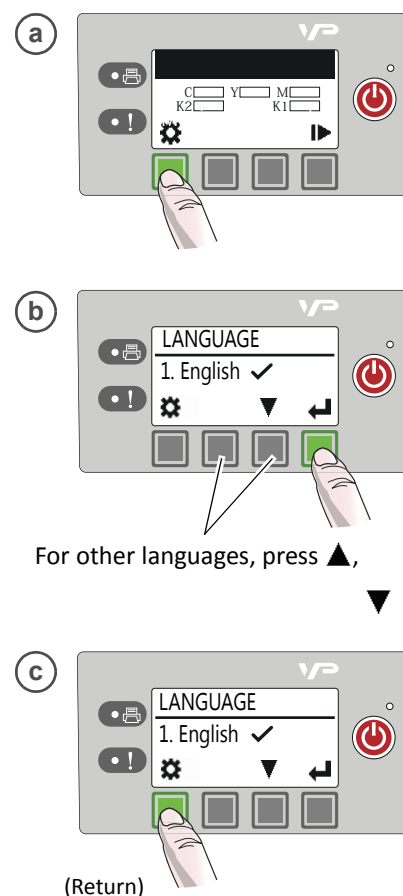
### 1 Remove tapes



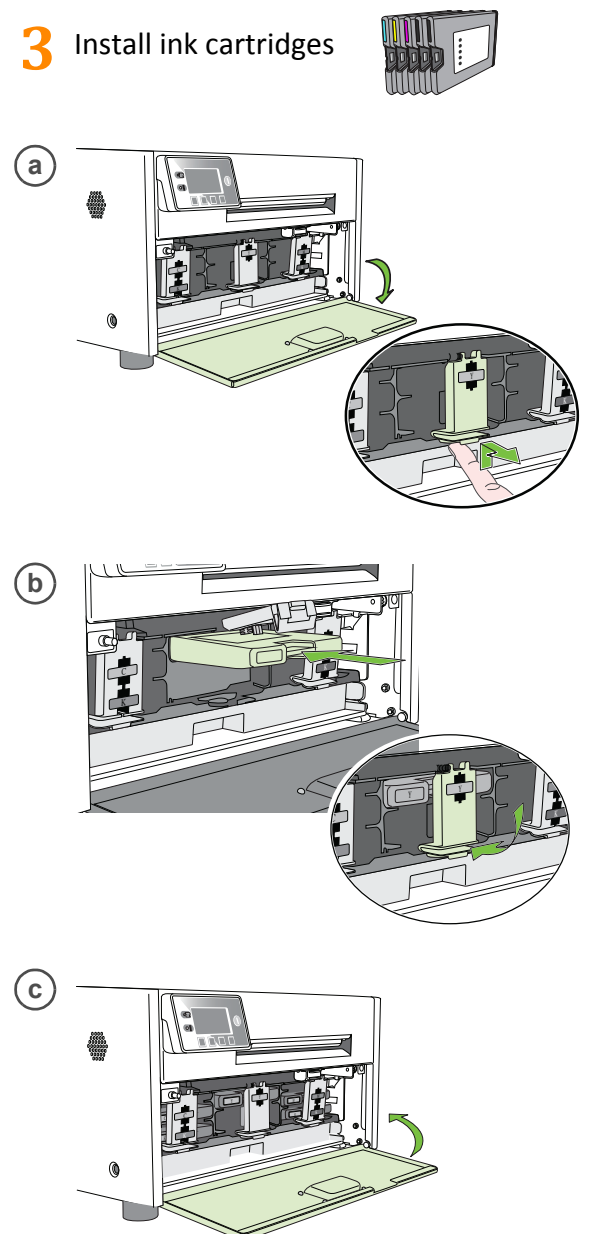
### 2 Connect power



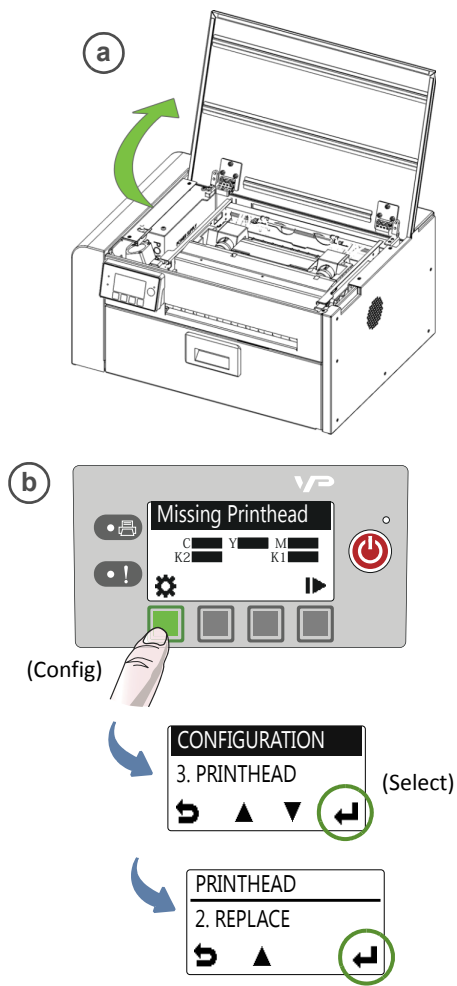
Choose display language  
After connecting power for the first time, press Config to set the display language for the control panel.



### 3 Install ink cartridges

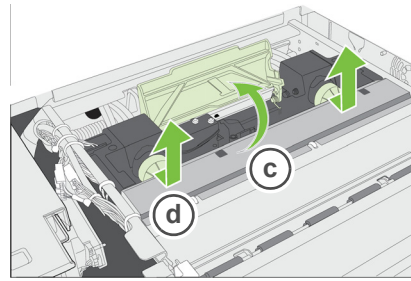


## 4 Install printhead

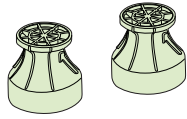


**!** Wait for printhead latch to be released. It will pop open. DO NOT force it open as it may break.

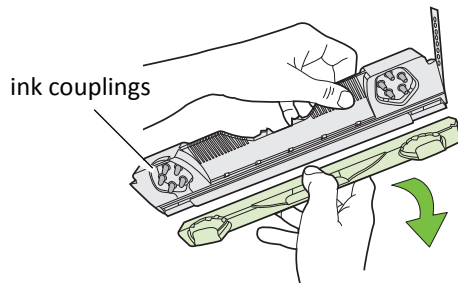
(c) Open printhead latch fully



(d) Remove caps

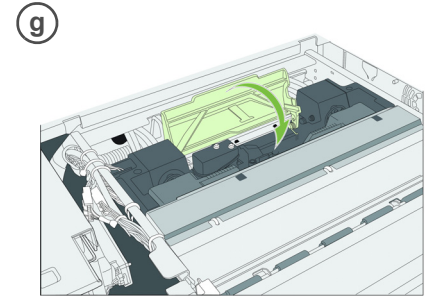
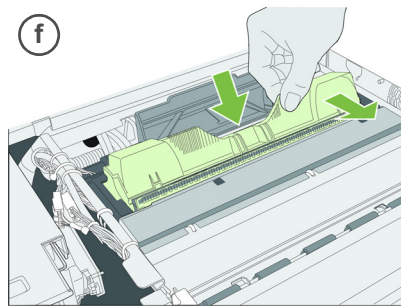
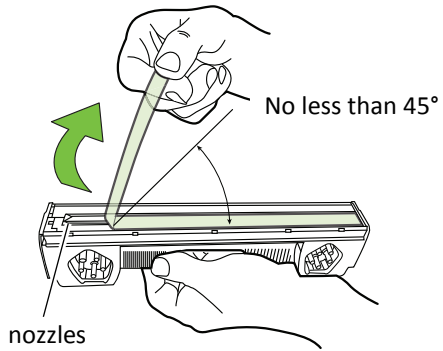
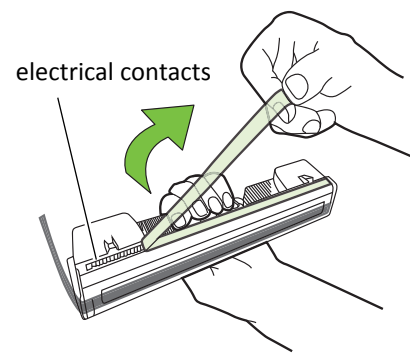


(e) Remove printhead from packaging

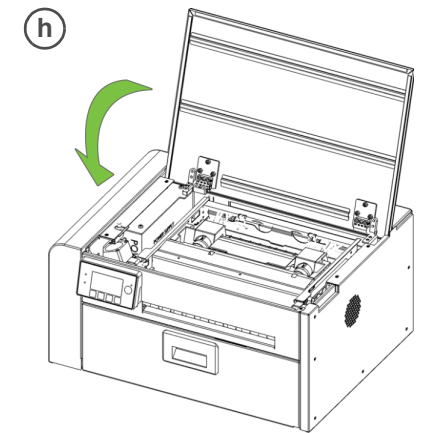


**NOTE:** Keep the orange cover. You will need it to cap the printhead if it is removed from the printer.

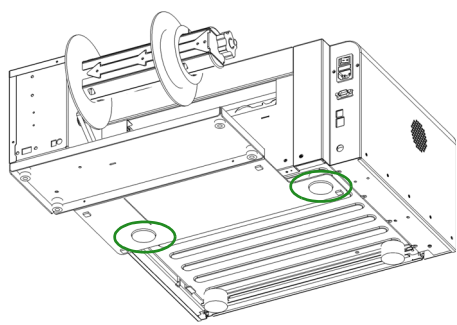
**!** Do not touch the ink couplings, electrical contacts, or nozzles.



Check that ink is flowing through the tubes on both sides of the printhead.

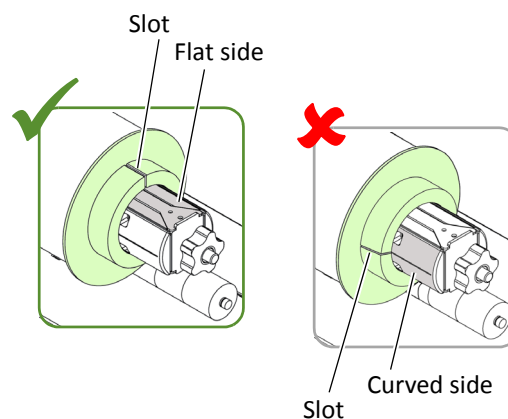
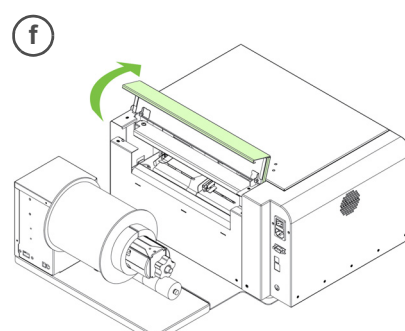
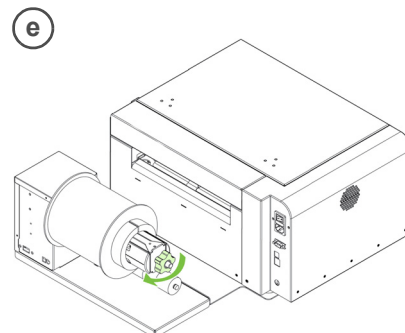
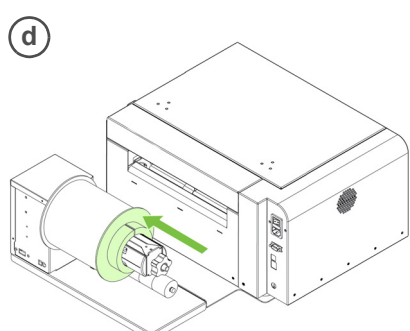
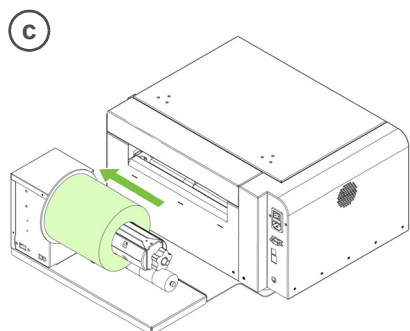
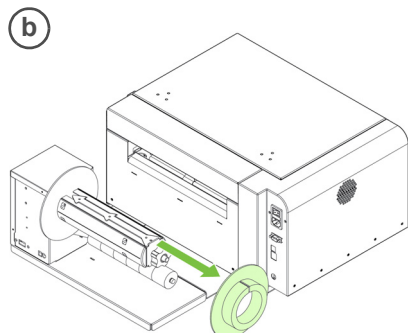
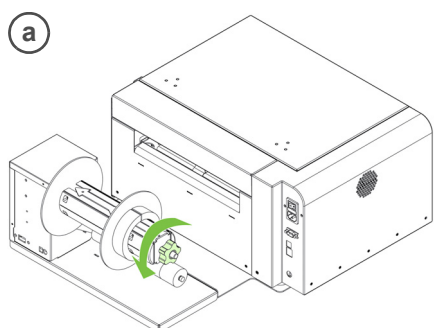


## 5 Install unwinder



Rear rubber feet of printer fit into holes on base of unwinder.

## 6 Load media



(g) Insert media until it stops. Wait for printer to load media.

