



MPI

Intelligent label printing. Advanced RFID functionality.



CL4NX

Customise your label printing
experience like never before



satoeurope.com



RFID Selection & Deployment Made Easy.

Encode a wide range of NFC, UHF, HF, and PJM smart labels and tags, printing human readable text and scannable barcodes, with the SATO CL4NX industrial label printer.

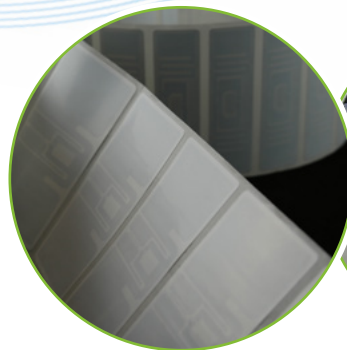
Customise your experience with onboard SATO AEP (Application Enabled Printing) technology and prevent downtime with SOS (SATO Online Services) predictive maintenance software.

Ensure the successful implementation of RFID in multiple markets and applications with the CL4NX industrial label printer.

Reduce labour costs, improve accuracy, enhance security and increase customer satisfaction, all while tracking and tracing goods quickly and efficiently.

- ✓ HF and NFC Encoding
- ✓ Double UHF coupler configuration technology
- ✓ Unique SATO PJM HF label technology

Discover more:



For more information contact: +44 (0) 1255 240 000 enquiries-uk@sato-global.com



CL4NX Intelligent label printing. Advanced RFID functionality. Customise your label printing experience like never before

satoeurope.com

© 2018 SATO CORPORATION. All rights reserved.